
AN_How to setup Surveon Teamviewer program

Application Notes

Version <1.0>



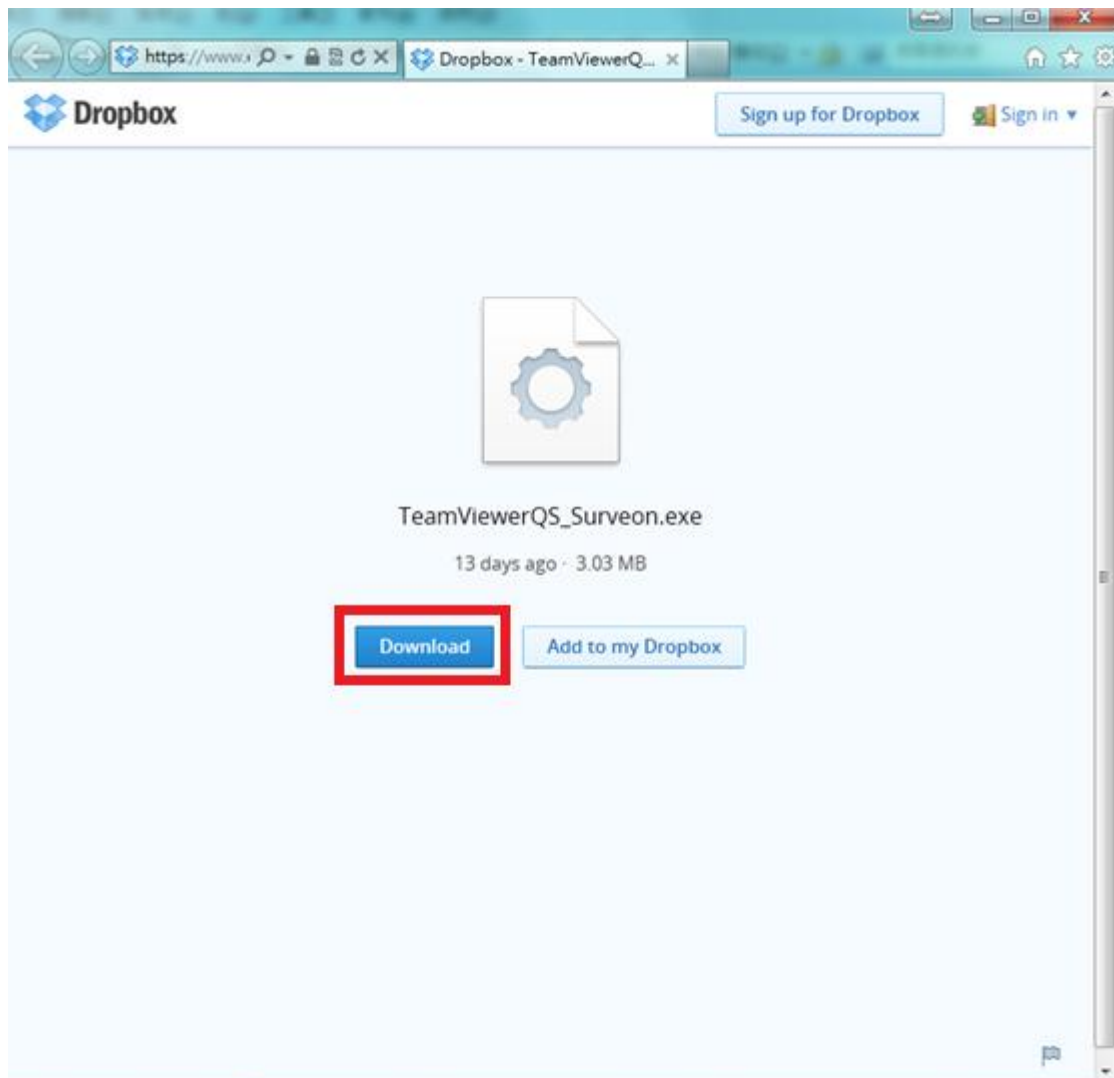
Technical Support Team

Preface

In order to quick investigate customer issue, customer can follow this document to setup the Surveon Teamviewer program on SMR/NVR/PC for Surveon Tech Support team.

Procedures

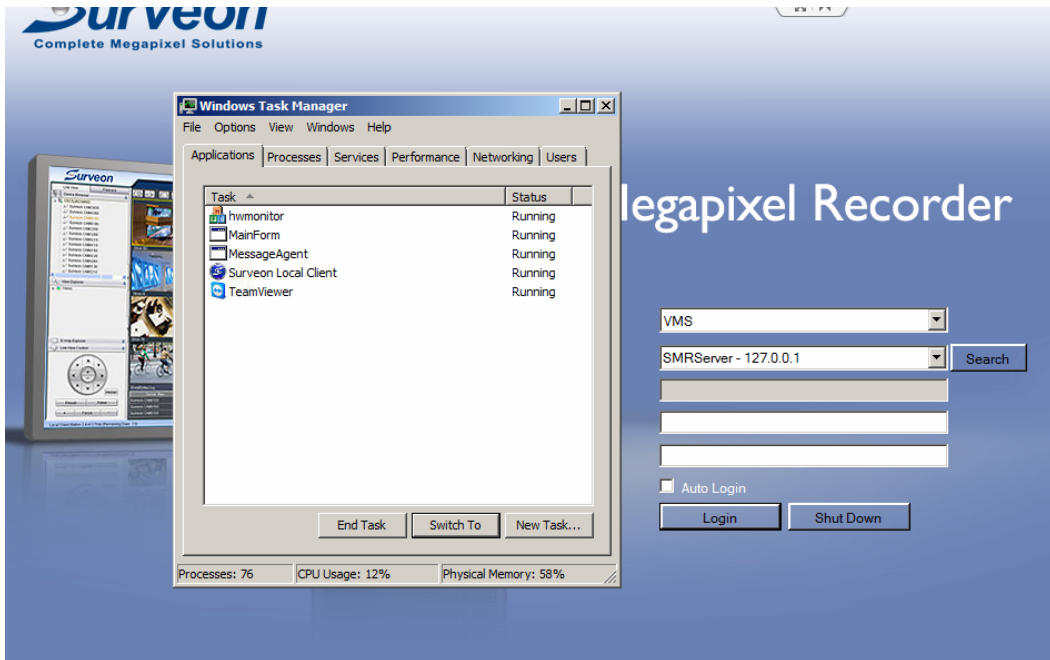
- 1 Download teamviewer from ["https://www.dropbox.com/s/xb5gx5i8sr136g4/TeamViewerQS_Surveon.exe?m"](https://www.dropbox.com/s/xb5gx5i8sr136g4/TeamViewerQS_Surveon.exe?m) on PC.



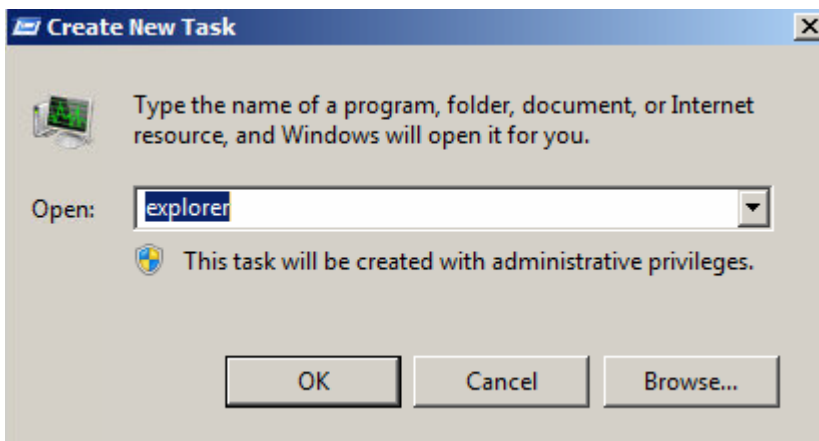
- 2 If customer uses SMR or NVR2000, please follow below steps. Otherwise, please go for step 3.

2.1 Copy the teamviewer package to USB.

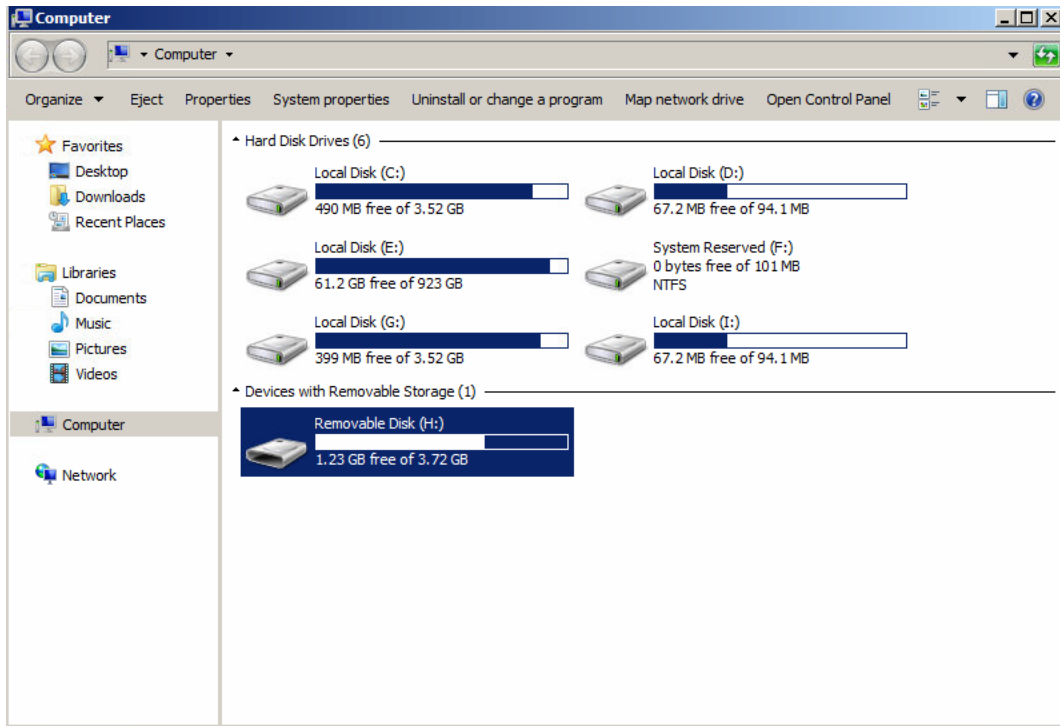
2.2 Press “CTRL”+”SHIFT”+”ESC” on SMR to launch task manager.



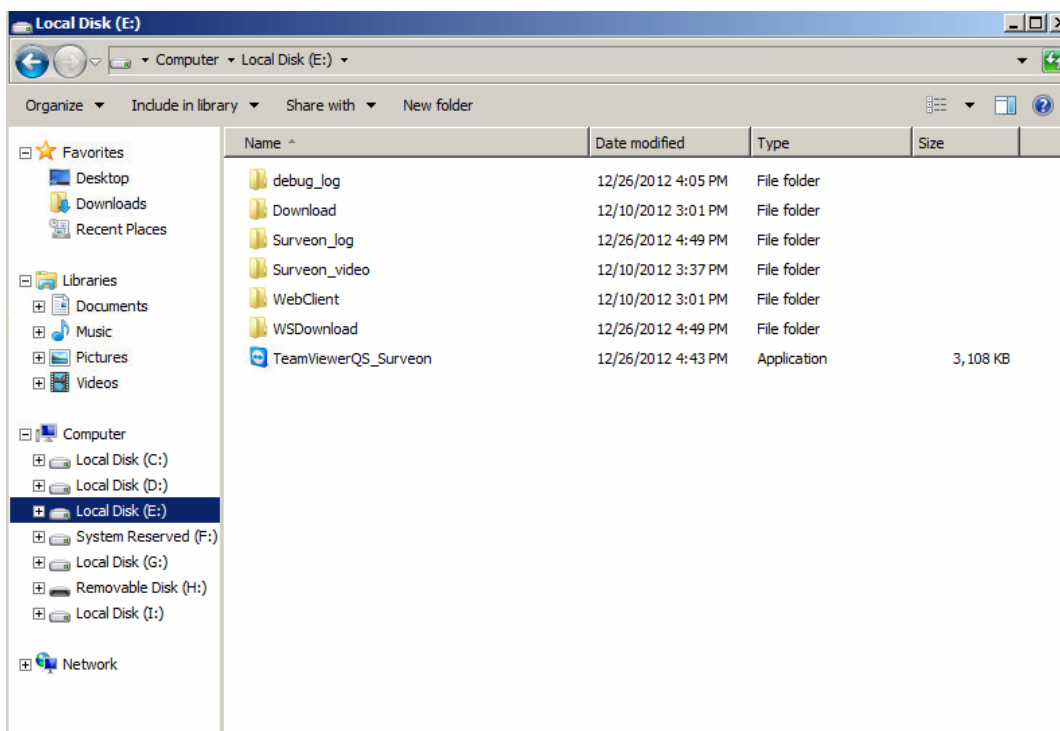
2.3 Click “New task” and input the “explore” to launch the file explorer.



2.4 Plug the teamviewer USB to SMR



2.5 Copy teamviewer to SMR/NVR RAID volume.



- 3 Execute TeamViewerQS_Surveon.exe.
- 4 After the teamviewer is launched, please provide the team viewer id and password to Surveon Tech Support Team.

Smart Megapixel Recorder

Surveon Team Viewer Support



Complete Megapixel Solutions

127.0.0.1

Allow Remote Control 

Please contact Surveon Tech Support and provide your ID and password to allow Surveon to connect to your SMR/NVR/VMS.

Your ID	817 090 166
Password	3197 

 Ready to connect (secure connection)

www.teamviewer.com

Shut Down