



- 8 port 10/100M Nway (Auto-Negotiation) switch
- Fully support 15.4W per each port(IEEE 802.3af)
- Support 30W per port(IEEE 802.3at) within 113.2W power budget
- Compact size (11 inch) with holders for rack mount
- Smart plug & play
- Internal power supply
- 1-Year Warranty

Hardware Specifications

Standards	<ul style="list-style-type: none"> • IEEE 802.3 10-BASE-T (Ethernet) • IEEE 802.3u 100-BASE-TX (Fast Ethernet) • IEEE 802.3x Flow Control (full-duplex flow control) • IEEE 802.3af Power over Ethernet • IEEE 802.3at Power over Ethernet Plus
Number of Ports	8 x 10/100Mbps RJ-45 PoE Ports
Data Transfer Rate	<ul style="list-style-type: none"> • Ethernet: 10Mbps/Half-Duplex, 20Mbps/Full-Duplex • Fast Ethernet: 100Mbps/Half-Duplex, 200Mbps/Full-Duplex
Features	<ul style="list-style-type: none"> • MAC Address: 1K • Buffer Memory: 64KB • Transmission Method: Store and Forward • Backplane: 1.6Gbps
Filtering/Forwarding Rate	<ul style="list-style-type: none"> • 100Mbps port-148,000pps • 10Mbps port-14,880pps
Transmission Media	<ul style="list-style-type: none"> • 10BaseT Cat. 3, 4, 5 UTP/STP, up to 100 m • 100BaseTX Cat. 5 UTP/STP, up to 100 m
Led Indicators	Per Port: <ul style="list-style-type: none"> • LINK/ACT • PoE Per Unit: <ul style="list-style-type: none"> • Power
Power Specification	Input <ul style="list-style-type: none"> • Power Input: 100~240V/AC, 50~60Hz Power consumption <ul style="list-style-type: none"> • Power Consumption: 120 Watts Output <ul style="list-style-type: none"> • PoE Standard: IEEE 802.3af/at Power over Ethernet PSE • PoE Power Output: Per Port 56V DC, Max. 15.4 watts (802.3af) or 30 watts (802.3at) • Power Pin Assignment: 1/2(+), 3/6(-) • Power Budget: Max. 113.2w • PD classification identity • PoE over current protection • PoE circuit sorting protection
Dimensions	Product : 280 × 185 × 44 mm (L x W x H) Box: 380 x 240 x 90 mm (L x W x H)
Weight	Net Weight: 1.6kg Gross Weight: 2.5kg
Environmental Specification	Operating Temperature: 0 to 45°C Storage Temperature: -40 to 70°C Humidity : 10 to 90% RH (non-condensing)
Accessory	<ul style="list-style-type: none"> • Power Cord(s) • User Manual • Rack-mount Holders
Certifications	FCC Class A, CE

ZPOE08

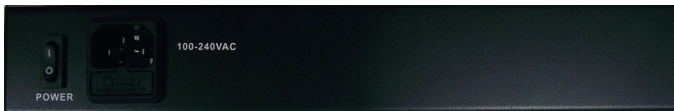
8 Port 10/100M 120W PoE
Ethernet Switch

Front Panel



LED	Color	Behavior	Description
Power	Green	On	Power is on
		Off	Power is off
10/100M	Green	On	Connection
		Off	No connection.
		Flashing	Data is transmitting or receiving
PoE	Yellow	On	Power device is connected
		Off	No power device is connected

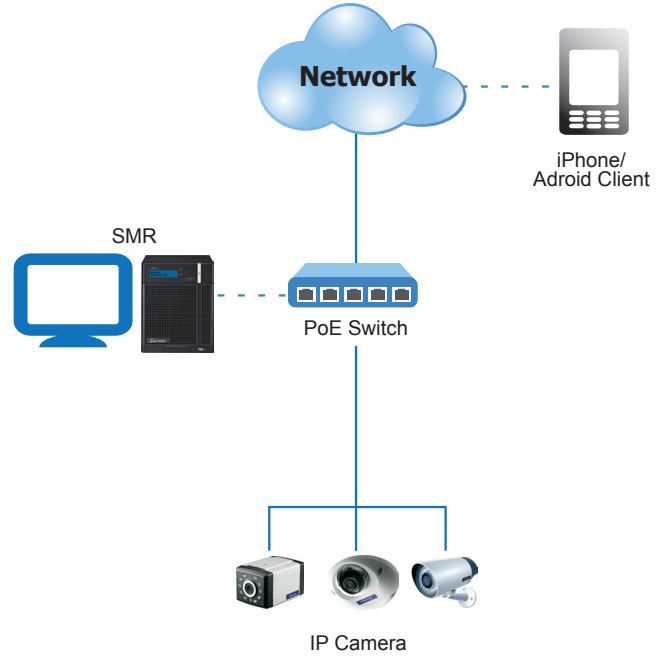
Real Panel



Ordering Information

Part Number	Description
ZPOE08-0030	8 port 10/100 120W PoE switch, US power cord
ZPOE08-8B30	8 port 10/100 120W PoE switch, UK+EU power cord

Application



Accessories