



- Centralized system with multi-monitor client display
- Advanced matrix wall management
- Unlimited number of cameras, servers and clients supported
- Scalable client-server architecture
- Central alarm status, data mining & reporting functions
- Multi-level, user-access privilege management
- Data protection and RAID storage management

Surveon Control Center (SCC) is based on the enterprise level client-server architecture and the domain based framework with the advanced features including TV-wall, central alarm management, I/O control, and advanced event report system. With the SCC, project managers can easily handle a distributed system with unlimited cameras, multiple servers and clients, and effectively take charge of the entire system using the centralized management.

### SCC Specifications

General & Miscellaneous	<ul style="list-style-type: none"> <li>• Unlimited NVR Hosts &amp; IP Device Supported</li> <li>• Live NVR Status &amp; NVR Storage Info</li> <li>• Auto Login &amp; Auto Connection Lost Recovery</li> </ul>
Live View (Live Monitoring)	<ul style="list-style-type: none"> <li>• Unlimited Live View Channels</li> <li>• Video Intelligence Supported</li> <li>• Real-Time Audio Monitoring</li> <li>• HTML and Image Overlays</li> </ul>
Multiple Displays	<ul style="list-style-type: none"> <li>• Unlimited View Monitors Displays</li> <li>• Direct Display to Secondary Monitors</li> <li>• Supports Live View, Playback and eMap Functions</li> <li>• Centralized Matrix Wall Management</li> </ul>
E-Map	<ul style="list-style-type: none"> <li>• Unlimited E-Map Hosts</li> <li>• Hierarchical Map Structure</li> <li>• Multiple Maps Supported</li> <li>• Real Time Event Alert</li> <li>• 4 E-Map Live Video</li> </ul>
Playback (Investigation)	<ul style="list-style-type: none"> <li>• 4 Channels Playback</li> <li>• Instant Playback Supported</li> <li>• Search by Date, Time, Camera, Event Type, VI Event Combinations</li> <li>• Post Search via VI Analyzer</li> <li>• Quick Search via Timeline Navigation Bar</li> </ul>
Event Log	<ul style="list-style-type: none"> <li>• Multiple Event Log (NVR Login/Logout, NVRStart/Stop, Monitor Start/Stop, Schedule Start/Stop, Disk Full, Disk Error, System Recycle, Keep Day Notification, System Abnormal, Network Abnormal, Camera Connection Lost, I/O Connection Lost, Digital Input Trigger, Video Intelligence, Video Lost, IP Change Detection, POSAbnormal Transaction)</li> <li>• Event Notification Setting</li> <li>• Notification of SMS &amp; Email Alerts</li> <li>• Notification of Output Alerts</li> <li>• Alarm Event Priority Define</li> <li>• Event Log Filter (Search by Date, Time, Log Type)</li> <li>• Log File Export</li> </ul>
PTZ Control	<ul style="list-style-type: none"> <li>• Control of Joystick</li> <li>• Remote PTZ Control</li> </ul>
Digital I/O Manager	<ul style="list-style-type: none"> <li>• Centralized I/O Management</li> <li>• On Screen Virtual I/O Button</li> </ul>

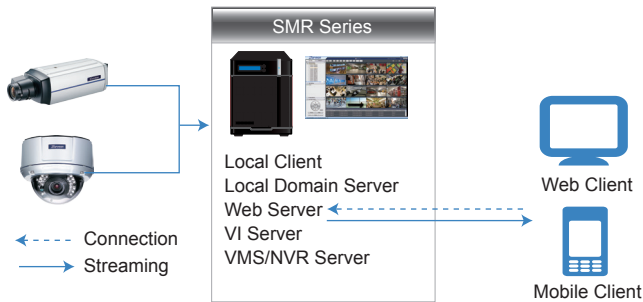
### Hardware Requirements

	<=20	Unlimited	
SCC Server Only (without Client)	OS	64-bit : Windows 7 SP1 Professional/Enterprise/Ultimate 64-bit : Windows 8 Pro/Enterprise 64-bit : Windows 8.1 Pro/Enterprise 64-bit : Windows 10 Enterprise	
	Software	Microsoft® .Net Framework 4.0 or above Requires Operating System and Graphic Card support for DirectX 9.0 or above	
	CPU	Intel Core i3 Dual Core or above	Intel Core i5 Quad-core or above
	RAM	4 GB or above	
	Display Card	nVidia GeForce GT610 1GB or above	
	Hard Drive	SATA 7200 RPM, 500 GB or above	
Network Interface	1Gbps or above		
SCC (+Matrix Wall Client)	<=20	Unlimited	
	OS	Same as above	
	Software	Same as above	
	CPU	Intel Core i7 Quad-core or above	
	RAM	8 GB or above	
	Display Card	nVidia GeForce GTX 660 2GB or above	
Hard Drive	SATA 7200 RPM, 500 GB or above		
Network Interface	1Gbps or above		

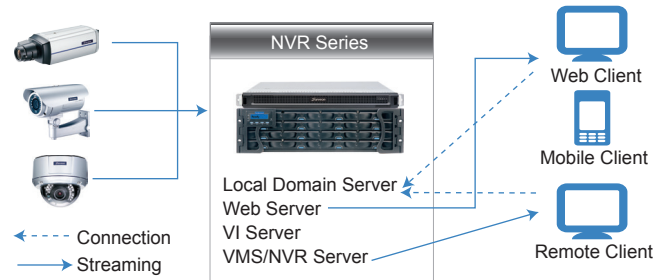
### Ordering Information

Part Number	Description
ZCD01H-0010	SCC with 1 Host License
ZCD05H-0010	SCC with 5 Host License
ZCD10H-0010	SCC with 10 Host License
ZCD20H-0010	SCC with 20 Host License
ZCDULT-0010	SCC with Unlimited Host License

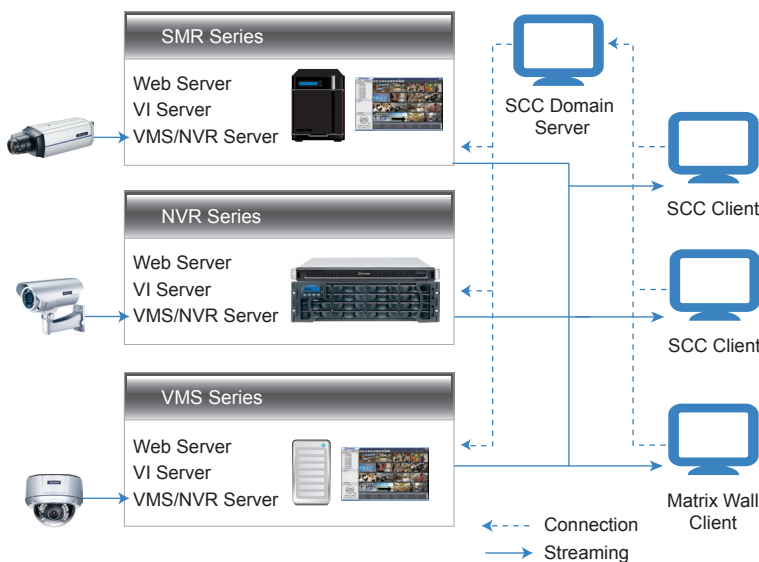
### All in one Architecture



### Client - Server Architecture



### SCC Architecture



#### SCC Modules

- **VMS/NVR Server:** Combines video recording, archival and retrieval functionalities for individual servers/standalone PCs.
- **Local Domain Server:** The interface between the VMS/VI/Web Servers and any clients.
- **Local Client:** Local access, preinstalled software for monitoring, access and configuration. Serves as the default .configuration point for NVR2000 series, which do not have a local client.
- **VI Server:** The video intelligence processing point for a VMS solution. Maybe be co-located with the VMS server, or exist on a separate server/PC.
- **Web Server:** Process video streaming for web client function.
- **Remote Client:** User installed software capable of accessing, configuring, and monitoring SMR/NVR, including PCs with VMS series installed.
- **SCC Domain Server:** Allows centralized control over multiple. SMR/NVR/VMS Server points and connections from multiple clients.
- **SCC Client:** Software capable of accessing multiple. SMR/NVR/VMS Servers through the SCC Domain Server.
- **Matrix Wall Client:** Software for Client PC. Allows Centralized Control Multiple Client PC's monitors.

### Matrix Wall Architecture

