



CAM4321LV

NVR2100

SCC

Surveon Megapixel Solutions for Hotel

Monitoring Areas in Hotels

- Reception Areas: front desks, safe deposit boxes, concierge, front entrance
- Public Areas: lobbies, meeting rooms, restaurants, banquet halls, parking lots
- Operation Areas: kitchens, mechanical rooms, luggage storage rooms, loading docks
- Recreation Areas: swimming pools, stores, indoor/outdoor facilities, business centers
- Others: stairs, elevator waiting areas, guestroom corridors, fences, elevators

Hotel Surveillance Applications

- Safeguard guests' lives, properties, and food safety
- Manage hotel operations, staff and facility security
- Conflicts (assaults, fights, arsons, accidents)
- Crimes (intrusions, robberies, violence)
- Emergency and evacuation management during natural disasters and accidents

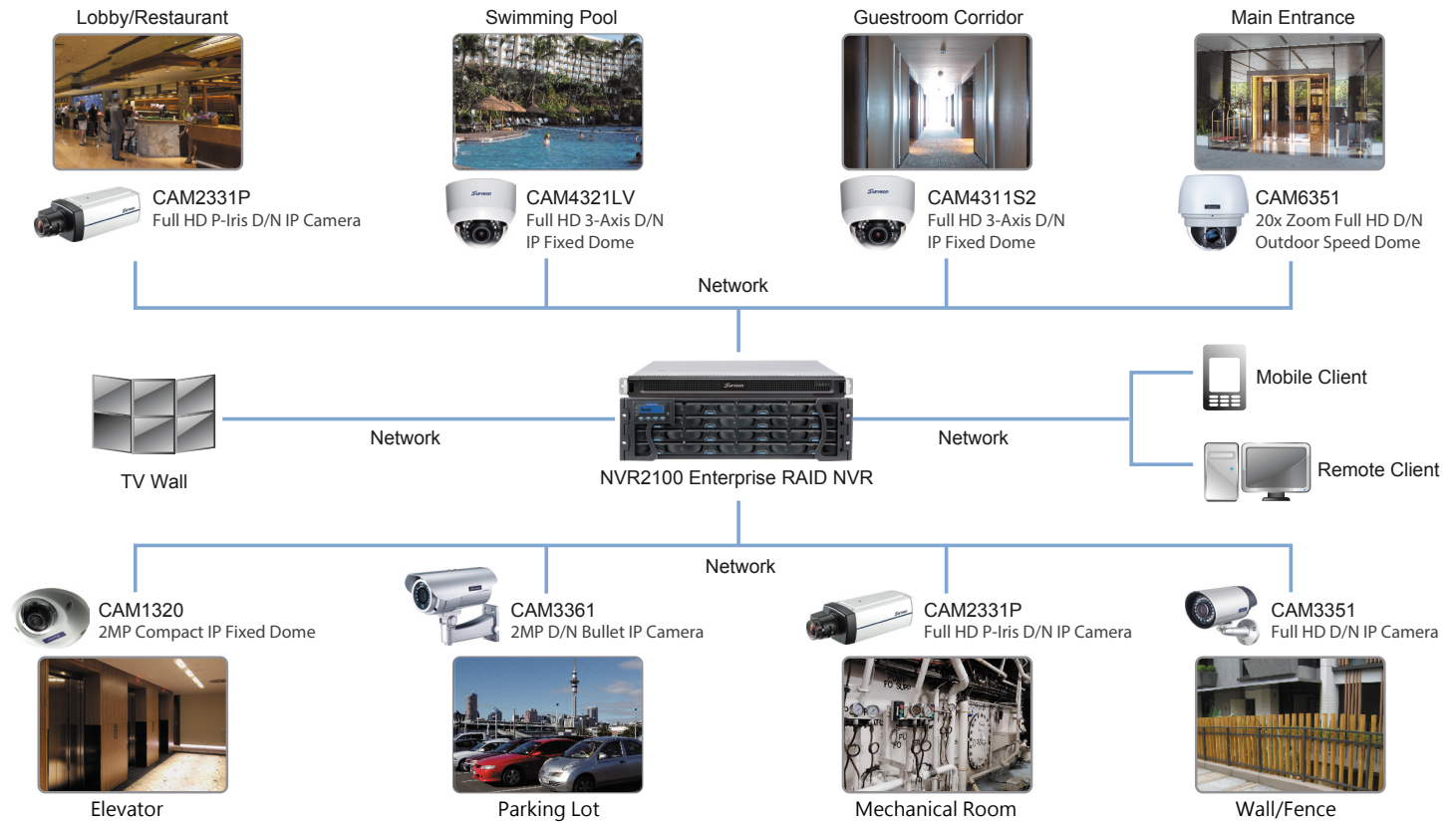
Hotel Surveillance Requirements

- Ensure guests' safety and security with a surveillance system compatible with the hotel environment
- Prevent intrusions, robberies, and other illegalities
- Active monitoring and quick response for a wide area
- Enhance video quality to megapixel and expand monitoring coverage
- Increase stability, reduce integration issues and maintenance costs

Surveon Megapixel Solution Benefits

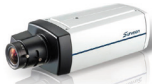
- Fully certified, in-house manufacturing, end to end solutions
- Client-server architecture and active remote monitoring
- Real-time VI for efficient alarm and event management
- High quality megapixel cameras and enterprise SCC software
- Industrial components, 3 year warranty

System Architecture



Recommendations

CAM2331P



Full HD P-Iris D/N Network Camera

- H.264/MPEG-4/MJPEG 2 simultaneous video streams
- Up to 1920 x 1080 video resolution
- Min. illumination 0.05 Lux @ F1.2
- POE, SD local storage, D/N ICR
- Built-in advanced ISP (WDR, HLC, 3D NR, Defog)

CAM1320



2MP Compact Fixed Dome Network Camera

- H.264/MPEG-4/MJPEG 2 simultaneous video streams
- Up to 1920 x 1080 video resolution
- f4.2mm lens
- POE, dual audio
- Compact size, wide temperature range

CAM3351



Full HD D/N Network Camera

- H.264/MPEG-4/MJPEG 2 simultaneous video streams
- Up to 1920 x 1080 video resolution
- f4.2mm lens, IP66, IR LED
- Min illumination 0 Lux (IR LED on)
- POE, dual audio, WDR

CAM3361



2MP D/N Bullet Network Camera

- H.264/MPEG-4/MJPEG 2 simultaneous video streams
- f3.3-12mm varifocal lens, IR 30M, IP66
- Wide temperature range, vandal proof, varifocal lens
- POE, SD local storage, D/N ICR
- Built-in advanced ISP (WDR, HLC, 3D NR, Defog)

CAM4321LV



Full HD 3-Axis D/N Fixed Dome Network Camera

- H.264/MPEG4/MJPEG 2 simultaneous video streams
- Up to 1920 x 1080 video resolution
- Min. illumination 0.1 Lux @ F1.4
- Advanced ISP functions (WDR, ROI, 2D/3D NR)
- PoE, SD local storage, D/N ICR

CAM4311S2



Full HD 3-Axis D/N Fixed Dome Network Camera

- H.264/MPEG4/MJPEG 2 simultaneous video streams
- Up to 1920 x 1080 video resolution
- Min. illumination 0.1 Lux @ F1.8
- Advanced ISP functions (WDR, ROI, 2D/3D NR)
- PoE, SD local storage, D/N ICR

CAM6351



20x Zoom Full HD D/N Outdoor Speed Dome

- H.264/MPEG-4/MJPEG simultaneous video streams
- Up to 1920 x 1080 video resolution
- 256 presets, wide temperature range, 20x optical zoom
- f4.7-94mm AF lens, IP66, IR LED
- Joy stick supported

NVR2100



Enterprise-Grade RAID NVR

- Maximum 64 CH 1080P recording
- Enterprise grade RAID management
- DAS and iSCSI SAN supported
- Expandable to Maximum 448TB
- Active video intelligence, remote management
- Built-in enterprise client-server VMS management
- Support up to 3000 channels with Surveon SCC



Surveon Headquarters
10F-3, No.102, Sec. 3, Zhongshan Rd.,
Jhonghe Dist., New Taipei City 235, Taiwan
Tel: +886-2-2226-2966
Fax: +886-2-2226-8278
Inquiry: sales@surveon.com
Marcom: marketing@surveon.com
Technical support: support@surveon.com

USA
Surveon Corporation
435 Lakeside Dr. Sunnyvale,
CA 94085, U.S.A.
Tel: +1-408-988-5728
Fax: +1-408-435-5048
E-mail: sales.us@surveon.com
Technical support: support.us@surveon.com

Europe (EMEA)
Surveon Europe Limited
5 Ringway Centre, Edison Road,
Basingstoke, Hampshire,
RG21 6YH, UK
Tel: +44 (0) 1256 844 566
E-mail: sales.europe@surveon.com
Technical support: support.europe@surveon.com

China
Surveon Technology Inc.
Room 402-403, Tower D, Yuanyang International
Center, East Fourth Ring Central Road,
Chaoyang District, Beijing, China, 100025
Tel: +86-10-6310-6168
E-mail: sales.china@surveon.com
Technical support: support.china@surveon.com