

# Surveon Failover Solutions

To Prevent Video Loss through Collaborative NVRs

Surveon Failover Benefits

Surveon Failover Mechanism

Execution Remark

Failover Success Case



# Surveon Failover Benefits

## Preventing Video Loss

Allow recording to be continued by collaborative NVRs within the system.

## Cost-efficiency

No spare NVR needed. Only share the licenses with NVR camera licenses for Failover purpose.

## Seamless Transformation of Configuration

When protected server fails, the Failover server will clone the configuration such as alarm rule of it at the same time, and take over the recording work without transferring effort.

## Flexible Architecture

One or more NVRs can take over other protected NVRs under various system structures.

## Real Time Alarm

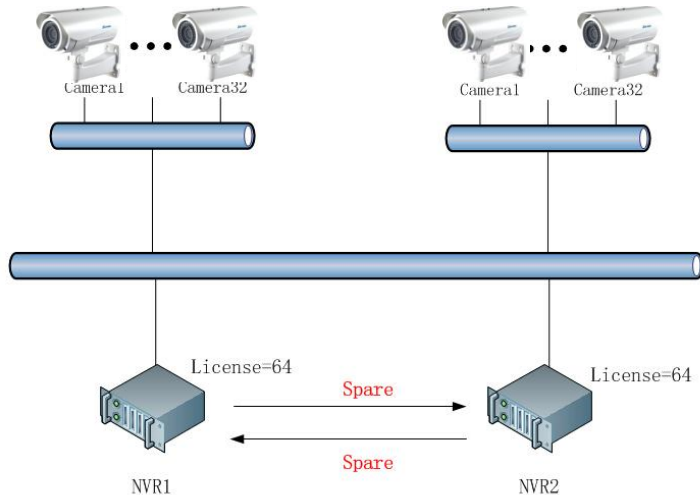
The system will send alert when protected server or Failover server are disconnected.

# Surveon Failover Mechanism

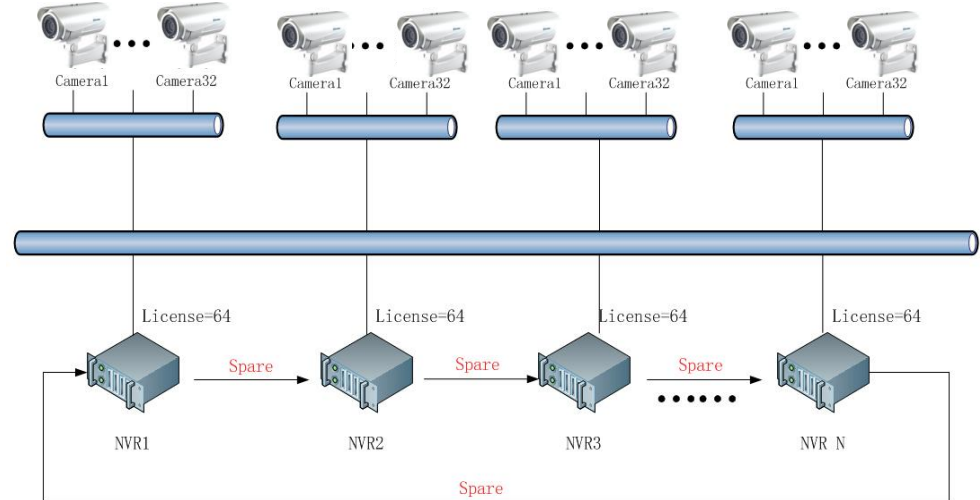
# Surveon Architecture (1/2)

- All NVRs can record normally **without having to spare one NVR** simply for Failover purpose.
- Support **mutual failover (1-on-1 or multiple to multiple)** among NVRs.

1-on-1



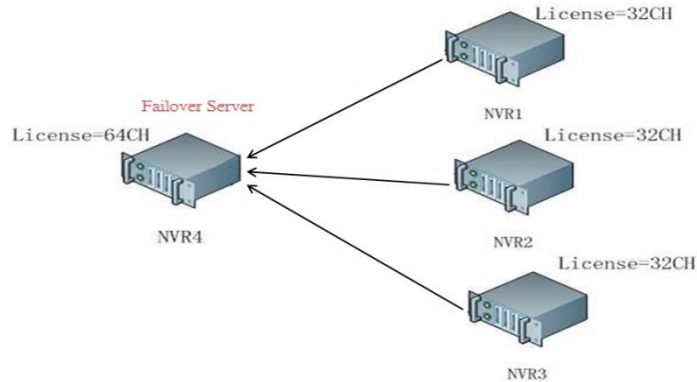
Multiple to Multiple



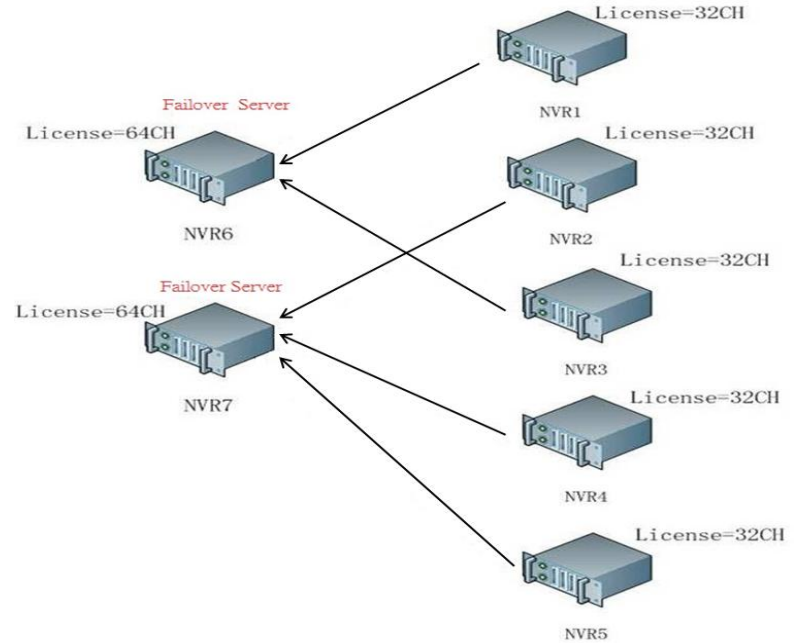
# Solution Architecture (2/2)

- Support different system structures.

## 1 Failover Server to multiple Protected NVRs

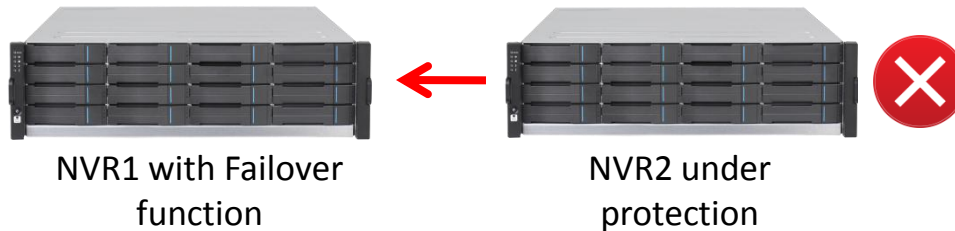


## Multiple Failover NVRs to Multiple Protected NVRs



# Solution Mechanism

- Both NVR1 & NVR2 perform recording under normal situation while NVR1 is with Failover function and NVR2 is the protected NVR.
- When NVR2 is detected as no responding or working for certain time, the system will be determined as failed.
- NVR1 will start importing NVR2 configuration and take over to record for NVR2 automatically.
- When NVR2 recovers and begin to record for 5 minutes, NVR1 will stop recording for NVR2 service.



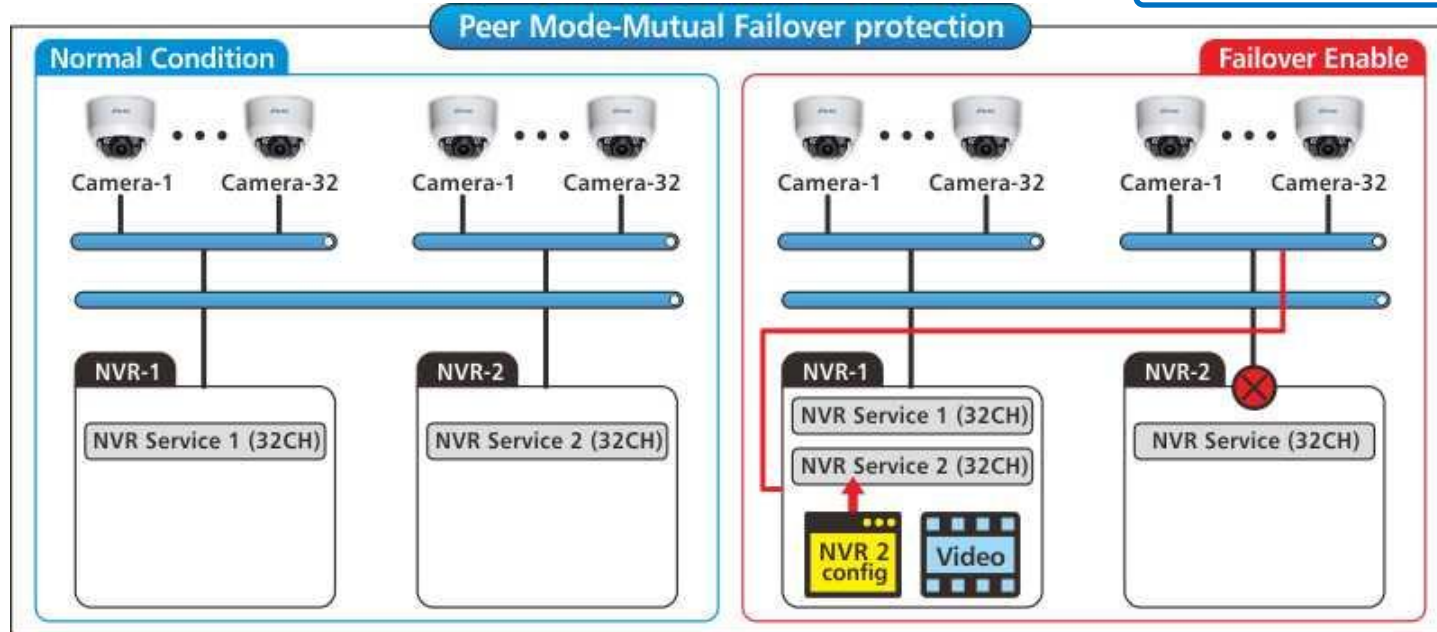
# Surveon Failover Solutions Comparison

Operation Mode	Peer Mode	Dedicated Mode
Structure	<p>The diagram shows two NVR units, NVR1 and NVR2, each with internal storage. NVR1 contains 'NVR Service'. NVR2 contains 'NVR Service 1' and 'NVR Service 2'. Red dashed arrows indicate that NVR1's service is replicated to NVR2, and NVR2's services are replicated to NVR1. Red 'X' marks are placed over the NVR1 unit and the NVR2 unit, indicating a limitation or failure point in this configuration.</p>	<p>The diagram shows two NVR units, NVR1 (Failover NVR) and NVR2 (Protected NVR). NVR1 contains 'NVR Service 3'. NVR2 contains 'NVR Service 2'. A third NVR unit, NVR3 (Protected NVR), contains 'NVR Service'. Red dashed arrows show that NVR1's service is replicated to NVR2, and NVR2's service is replicated to NVR3. Both NVR1 and NVR2 are connected to a shared external storage unit containing 'iSCSI Port 3' and 'iSCSI Port 2'. Red dashed arrows show data flow from the NVRs to the storage. Red 'X' marks are placed over the NVR2 unit and the iSCSI Port 2, indicating a limitation or failure point in this configuration.</p>
Storage in Use	Internal Storage	External Storage
Recording	Protected NVR's videos will be recorded and saved to a separate location in Failover NVR.	Protected NVR's videos will be recorded and saved to the same location in the shared external storage.
Recommended Applications	Healthcare, Intelligent Buildings, Education, Retail, SMBs, Transportation, Restaurant	Banking, Critical Infrastructures, Airport, Casino



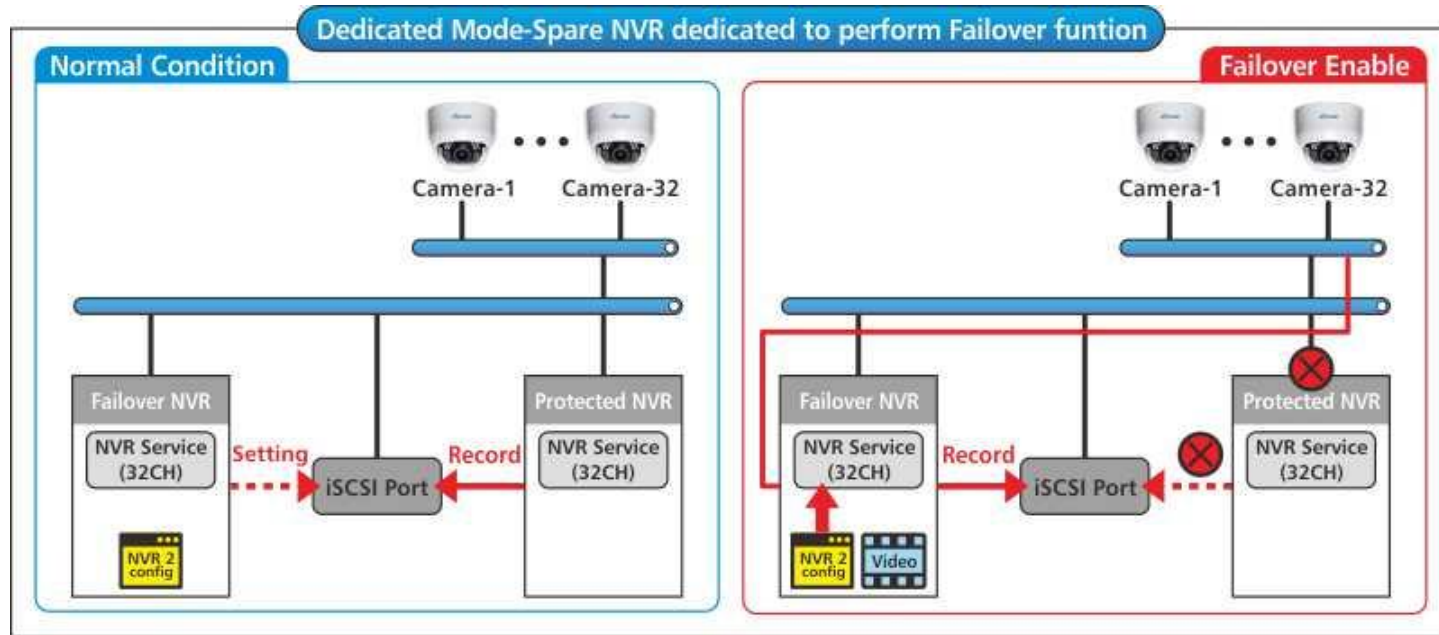
# Internal Storage Structure – Peer Mode

Surveon Unique Technology



- **Mutual Failover protection:** Without preparing a spare NVR, both protected NVR and Failover NVR perform recording under normal situation, when protected NVR fails, its video will be recorded to Failover NVR's internal storage.

# External Storage Structure – Dedicated Mode



- **Spare NVR dedicated to perform Failover function:** The Failover NVR shares the same file space as protected NVR whether it's working or not, resulting in the protected NVR's video will be recorded and saved to the same location once it's taken over by Failover NVR.

# License Remark

- Failover can share the licenses of camera.



- Failover licenses only support the same amount of cameras.

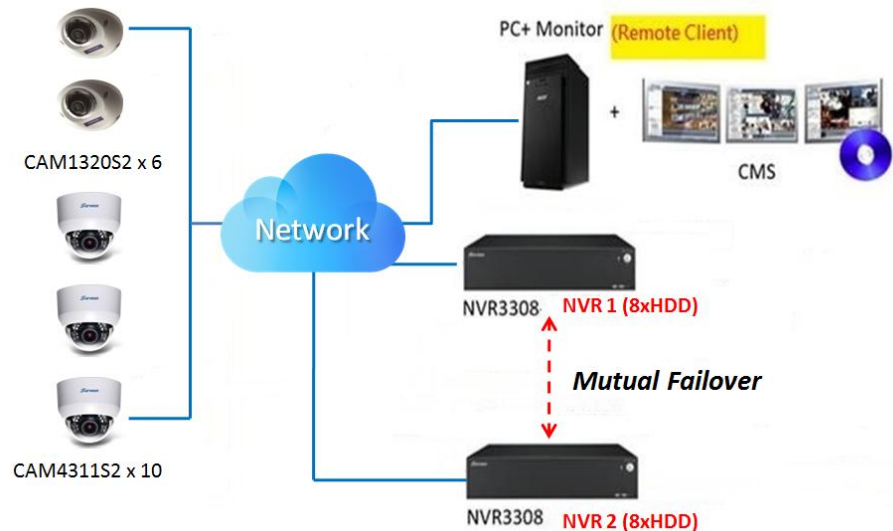


- Only NVR FW version 4.0 or above support Failover function.

Model	Max. Channels
NVR3308E1	32
NVR3308A1 NVR5412E1 NVR5416E1	64
NVR5412A1 NVR5416A1	96
NVR7312 NVR7316	128

# Success Case Study – Peer Mode

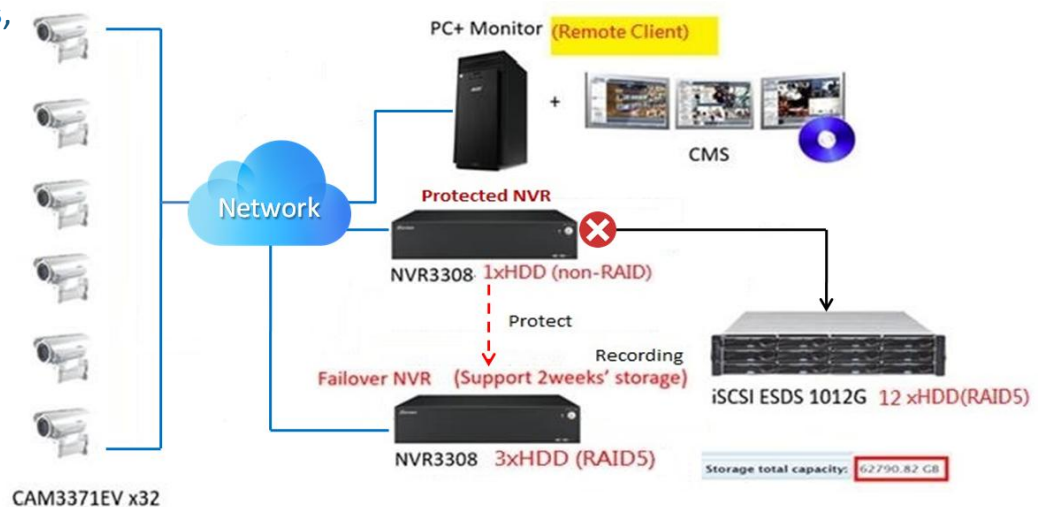
- Customer: Taipei City Hospital, the largest medical organization in Northern Taiwan.
- Project Needs & Challenge: Emergency room required to keep half a year recording data.
- Solutions: The peer mode supports **mutual failover among two NVR3308**. When one of NVRs fails, the other NVR will take over recording and save the failed NVR's videos to its **internal storage**.
- Benefits: For **middle-large projects with limited budget**, this failover working model provides the best C/P solution, allowing the system to record continuously for long time **without having an extra iSCSI storage**.



# Success Case Study – Dedicated Mode

- Customer: Taiwan Fixed Network Co., Ltd. , the biggest private owned fixed telecom operator in Taiwan.
- Project Needs & Challenge: Cloud service room required to keep half a year recording data.
- Solutions: Under normal condition, the protected NVR records videos to **iSCSI storage**. When it fails, the recording will be taken over by Failover NVR, and the videos will be saved to Failover NVR's internal storage.

- Benefits: For **large and critical applications**, this working model has external iSCSI storage for **180+ days data retention**. When protected NVR fails, the Failover NVR will record for it, giving MIS enough time to resolve the problem occurred.



## Various ways for Failover based on project needs

- Catering to different vertical applications, Surveon offers a variety of Failover solutions, including **Peer Mode and Dedicated Mode**, giving partners many options for their projects.

## Saving time with seamless transformation of configuration

- Without manual setting, when protected server fails, the Failover server will clone the configuration such as alarm rule of it at the same time, and take over its recording work.

## Cost-effective mutual Failover for maximum usage

- Without preparing a spare NVR, both NVR1 and NVR2 in the system could serve as Failover NVR for each other.



[www.surveon.com](http://www.surveon.com)  
[sales@surveon.com](mailto:sales@surveon.com)

The background is a deep blue gradient. On the left side, there are several overlapping, flowing, light blue lines that create a sense of movement and depth. These lines are composed of many thin, parallel lines that form a grid-like pattern in some areas, while being more fluid and organic in others. The overall effect is a modern, tech-oriented aesthetic.

# Thank You

*Surveon, your reliable partner for growth*