

NVR3008 Series

32CH Megapixel RAID NVR



- Maximum 32CH 1080P Recording
- Support 8-bay SATA Hard Disk
- Support RAID 0,1, 5, 6 for Data Protection
- Built-in Real-Time Video Intelligence Detection
- Built-in Dual Display
- Support Surveon Control Center (SCC)
- In-House Design & Production
- 2-Year Warranty

Network Video Recorder

Software Specifications

Live View	<ul style="list-style-type: none"> • Real-time network camera discovery • Versatile views of various screen divisions • HTML and image overlays • Multiple views supported • View patrolling for single or multiple views • Real time video/event alarm display * • Support 3 installation modes and 5 different fisheye Dewarp display modes * • Support live audio 	Recording Policy	<ul style="list-style-type: none"> • Supports up to 32 channels megapixel recording • Continuous recording • Manual recording • Event-driven recording along with rules * • Scheduled recording on daily or weekday basis • Post alarm recording 5-45 minutes • Pre-alarm recording 5-45 minutes
eMAP *	<ul style="list-style-type: none"> • Drag-n-drop camera manipulation • Directional camera display • Hierarchical map structure • Real time event alert • Instant live video of camera • Multiple layer maps supported 	Rule Manager *	<ul style="list-style-type: none"> • Conditional recording/alert/notification • Email, FTP, SMS, phone,popup window, PTZ,VI Panel,Relay output notifications • Sound, alarm, round-the-clock alerts
PTZ	<ul style="list-style-type: none"> • Pan, tilt, zoom operations (dependent of camera) • Built-in PTZ control panel • Preset position (dependent of camera) • Event-driven camera patrolling • Support CH Products USB joystick * 	Remote Management	<ul style="list-style-type: none"> • Full functional operation & management via VMS Client • Remote management and control via SCC & SCC Client
I/O	<ul style="list-style-type: none"> • Digital I/O management • Support Ethernet I/O device * 	Remote Client	•Web Client • iPhone client • Android Client
Multiple Displays *	<ul style="list-style-type: none"> • Support dual monitors • Supports live view, playback, eMap functions • Direct display to secondary monitor(s) 	Storage Expansion	Built-in RAID storage management
Investigation	<ul style="list-style-type: none"> • Search by date, time, camera • Search by VI event combinations * • Search over multiple days • Search over multiple cameras • Different color display on recorded data date • Search via built-in VI analyzer * • Intuitive, video thumbnail search results * • Cue-in, cue-out and repeat • Quick playback by video thumbnail * • 1/8, 1/4, 1/2, 1x, 2x, 4x, 8x play, pause, stop • AVI-formatted video clip export • 4-channel synchronized playback * • 5 different time interval scroll bar drag and drop playback • Support 3 installation modes and 5 different Fisheye Dewarp playback display modes * 	General & Misc.	<ul style="list-style-type: none"> • Video privacy mask • Digital zoom in, zoom out * • Log viewer, log export mechanism • Client auto login • Automatic storage recycling • Client-server architecture • Customized authority account management * • Configurable video retention period • Digital watermark proofing • Support DDNS Function * • Support NTP Server synchronized * • Provide System and VI setup Help assistance • Support Customized Event management and log mechanism • Auto port mapping for internet connection
Video Intelligence *	<ul style="list-style-type: none"> • General motion detection • Camera motion detection • Missing object detection • Foreign object detection • Intrusion detection • Forbidden area detection • Tampering detection • Virtual fence • Object counting 	Language	<ul style="list-style-type: none"> • Multiple Language supported on VMS and Web Client: English, French, German, Portuguese, Spanish, Simple Chinese, Traditional Chinese, Italian, Japanese, Russian, Slovak, Czech,Dutch and Polish

*Phase 2 function.

NVR3008 Series

32CH Megapixel RAID NVR

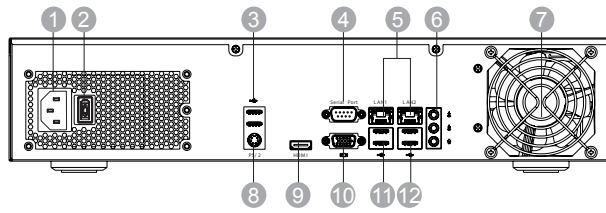
Functions

Front View



- ① Power Button
- ② HDD Status Indicator
- ③ USB Port x2

Rear View



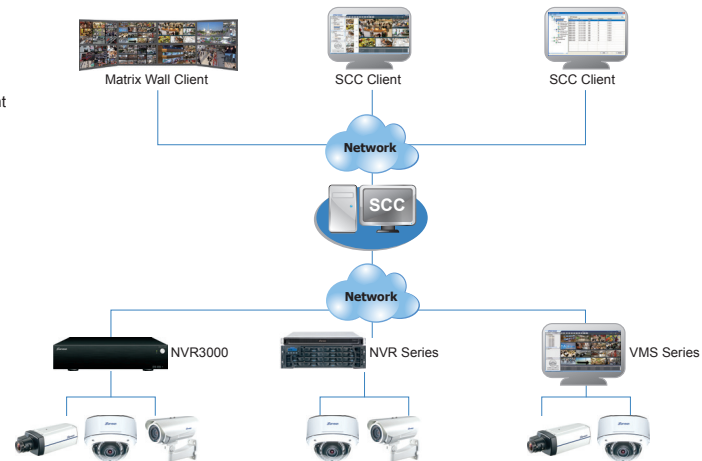
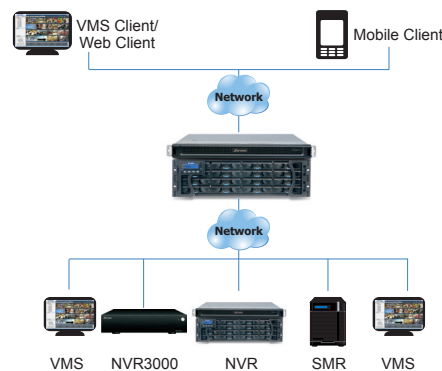
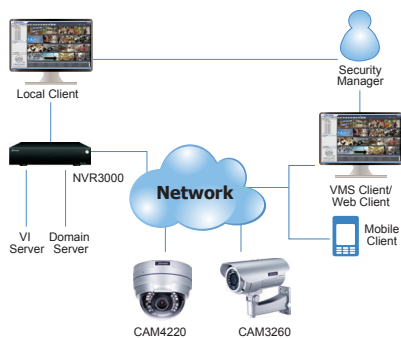
- ① Power Socket
- ② Power Switch
- ③ USB Port x2
- ④ Serial Port
- ⑤ LAN Port
- ⑥ Line-In, Line-Out, Mic-In
- ⑦ Fans
- ⑧ PS/2/Kb/Ms Port
- ⑨ HDMI Port
- ⑩ VGA Port
- ⑪ USB Port x2
- ⑫ USB Port x2

Architecture

A: All in one

B: Master-Slave

C: SCC + MatrixWall



Hardware Specifications

NVR3008 Series	
System Processor	Intel Core i3 Dual-Core 3.3GHz
System Memory	DDR3 4GB (up to 16GB)
Operating System	Linux Embedded System
Storage	8 x 3.5" SATAII/SATAIII hard disk drives
I/O Interface	<ul style="list-style-type: none"> • RJ-45: 2x Gigabit Ethernet • USB: 8x USB2.0 • VGA: x1, HDMI: x1
RAID	RAID 0, 1, 5, 6
Electrical	<ul style="list-style-type: none"> • Input voltage: 100-240V, 3.5A • Power Supply: 250W
Operating Environment	<ul style="list-style-type: none"> • Humidity: 5% to 80% (non-condensing) • Temperature: 5° to 40°C
LED Indicator	Yes (Power, HDD)
Dimensions	88(H) x 430(W) x 390(D) mm
Weight	≤9kg (without HDD)
Certification	BSMI, CB, FCC / CE Class B, UL60959/ IEC 60950, CCC for power only, GOST
Warranty	2 years

Ordering Information

Model Name	Description
NVR3008PX-16	16 CH, 8 Bay Megapixel RAID NVR
NVR3008PX-25	25 CH, 8 Bay Megapixel RAID NVR
NVR3008PX-32	32 CH, 8 Bay Megapixel RAID NVR
ZCD5H-0010	SCC with 5 Host License
ZCD10H-0010	SCC with 10 Host License
ZCD20H-0010	SCC with 20 Host License
ZCDULT-0010	SCC with Unlimited Host License

Optional Accessories

Part Number	Description
H72A0HA2321-0030	Hitachi, Enterprise, 1TB SATA HDD, 3Gb/s
H72A1HA2321-0030	Hitachi, Enterprise, 2TB SATA HDD, 3Gb/s
H72A1XA3XXX-0030	Hitachi, Enterprise, 2TB SATA HDD, 6Gb/s
H72A2XA2XXX-0030	Hitachi, Enterprise, 3TB SATA HDD, 6Gb/s
H72A3XA3XX1-0030	Hitachi, Enterprise, 4TB SATA HDD, 6Gb/s
HDLT72A3200-00301	Toshiba, Desktop, 2TB SATA HDD, 6Gb/s
HDLT72A3300-00301	Toshiba, Desktop, 3TB SATA HDD, 6Gb/s
ZJOYSTICK-0050	CH Products, IP Desktop USB Joystick
ZETHIOBOX-0030	Ethernet Digital I/O Controller Box