



SurveOne System Health Check Tool Feature Introduction

Application Notes



Technical Support Team

Preface

In the surveillance industry, more and more CMS applications have been developed and widely used by customers. However, only some advanced software can handle management and monitor the status of hardware, network, and hard disks from CMS.

Surveon is a world known total solution company, from IP camera, NVR to storage. With more than 10 year experience, we develop a new technology to collect and summarize all NVRs information including storage, IP camera, hardware, and network allowing users to gather important information they need easily and timely!

SurveOne Feature Intrudocion

There are four sections in SurveOne : Overview, Monitor, Workflow, and Event Log.

A. Overview

There are three parts in the overview section: NVR status, Camera status, and Events.

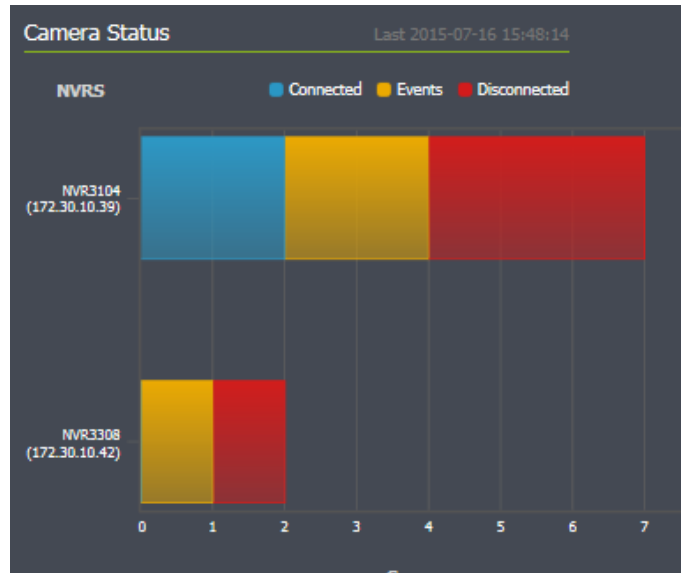
✧ **NVR status**

Users can see all the added NVRs from SurveOne. Healthy Warning and Error status are shown here.



✧ Camera status

Users can see the camera status you've added in the NVR from SurveOne. Connected, Events (ex: detected motion), Disconnected status are shown here allowing users to check the IP camera network connection and the how many cameras are being event-triggered.



✧ Events

When events happened, users don't need to see log one by one on NVR/SCC. SurveOne summarizes all the events. If you want to see the details, simply click on the icon, you will see which NVR is in trouble and what went wrong. 3 different events are shown here, Critical Error, Error, and Warning.

Critical Error: RAID error, not recording , DISK, HW (fan, power).

Error: Network error, video loss, log in failure.

Warning: high CPU, high memory, high system temperature.

Events

Critical Error: 0 Error: 6 Warning: 0

Since 2015-07-16 15:41:25

Latest Events

- Critical Error: None
- Error: 2015-07-16 15:50:31 NVR3104: Video Loss Happened[1]
- Warning: None

In “Overview”, you can also see the complete list of NVR, Camera, Client and Account.

✧ **NVR list**

Users can quickly check the detailed information of NVR on the same interface. EX: IP, channels number of cameras, status, firmware version, record days, and VI number.

Here you can add NVR in the SurveOne.

NVR Name	Model	IP Address	Channels	Status	Manage Device
NVR3104	NVR3000	172.30.10.39	7	Healthy	
NVR308	NVR3000	172.30.10.42	2	Healthy	

Details

Name	NVR3104
Model	NVR3000
IP Address	172.30.10.39
Channels	6
Status	Healthy
Version	3.0.0 A01
Record Days	1days,4.93hours
Vi Count	0

✧ **Camera list (of all added NVR)**

Here the user can check all the IP of the camera.

NVR	Camera Name	Model	IP Address	Status
NVR3104 (172.30.10.39)	CAM7511	CAM7511	172.30.10.61	
NVR3308 (172.30.10.42)	CAM2311	CAM2311	172.30.10.97	
	CAM1301	CAM1301	172.30.10.99	
	CAM2441P	CAM2441P	172.30.10.95	
	CAM2441P	CAM2441P	172.30.10.68	
	CAM2511	CAM2511	172.30.10.85	
	CAM142052-3	CAM142052-3	172.30.10.80	

✧ Client list

In here, users can see who has logged in and let the administrator know the logged in numbers and further to avoid the network traffic jam. Logged clients may vary from web client, mobile client, to remote client.

NVR	Client IP Address	Client Version
NVR3104 (172.30.10.39)	172.30.10.58	WebClient 2.5.0 A04 2015.06.09
NVR3308 (172.30.10.42)		

✧ Account list

Users may see how many accounts are created and the status of each account.

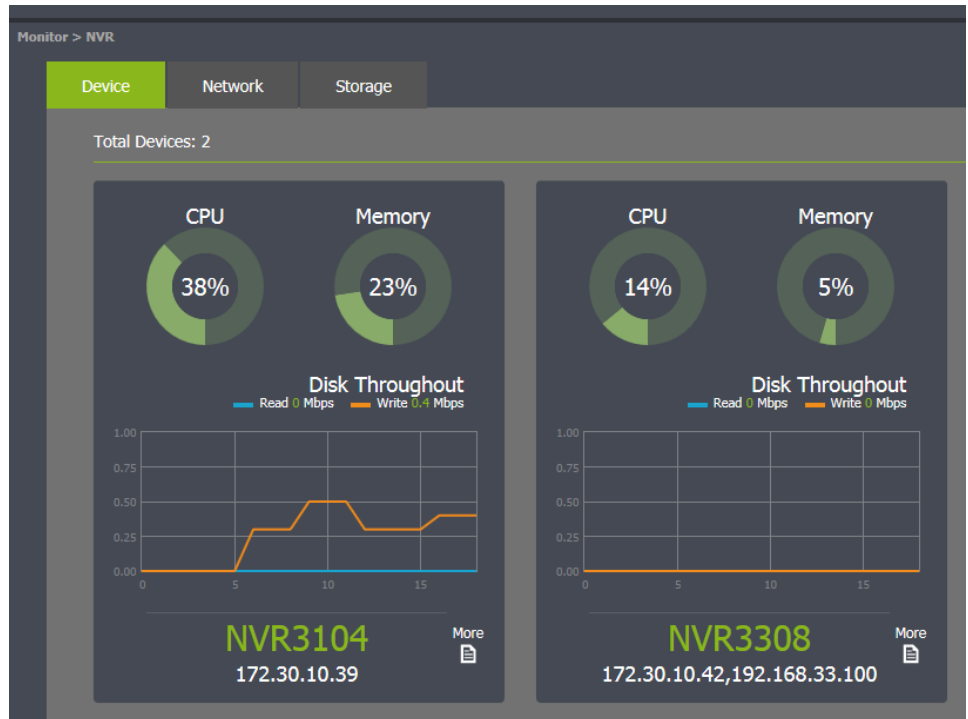
NVR	Account List	Status
NVR3104 (172.30.10.39)	admin	Enable
NVR3308 (172.30.10.42)	poweruser	Enable
	user	Enable
	viewer	Enable

B. Monitor

Here, users can monitor the three main statuses on each NVR: Devices, Network, and Storage. Users can see detailed information rather than check it one by one. Furthermore, when the error occurred, users will know which part went wrong and then can work faster to recover.

✧ Devices

Here users can see NVR's CPU, Memory, and DISK Throughout.



✧ **Network**

Here you can see the network connectivity.



✧ **Storage**

The status of each disk volume is shown here, make it easier for users to learn the storage status.

In here, users can see “Recording spaces”, “Free space”, and usage percentage diagram.

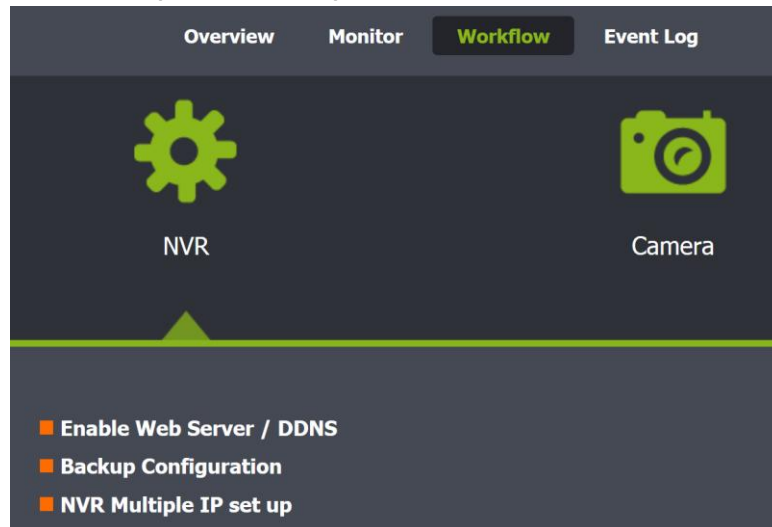


C. Workflow

Users can operate several important features here.

✧ **NVR:**

1. Enable Web Server / DNS
2. Backup Configuration
3. NVR Multiple IP set up

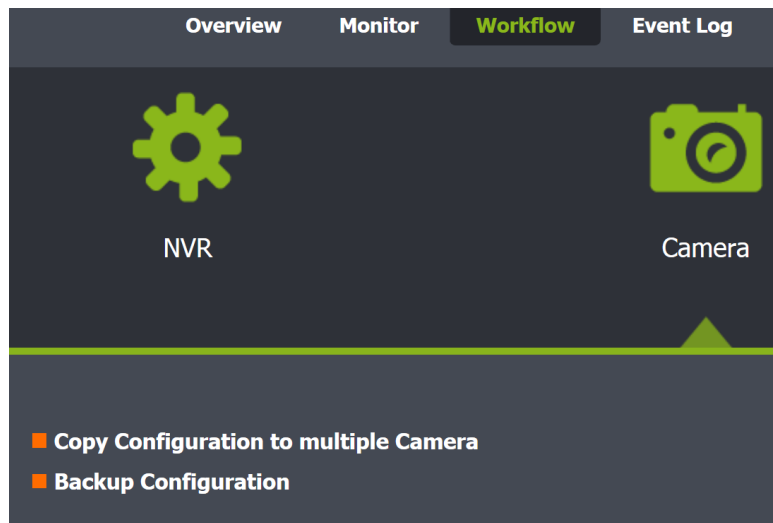


✧ **Camera:**

1. Copy Configurations to Multiple Cameras
2. Backup Configuration.

Users can apply the configurations to multiple cameras to

save time and efforts.



D. Event Log

Users don't need to check each NVR's log one by one anymore. In this section, SurveOne summarize every NVR's logs here to save time from searching one by one from each NVR.

NVR	SOURCE	Severity	Date / Time	Event
NVR3104 (172.30.10.30)	CAM2311	Warning	2015-07-16 16:09:26	Video Loss Happened[1]
NVR3108 (172.30.10.42)	CAM2311	Success	2015-07-16 16:09:26	Video Recover Happened[1]
	CAM2311	Warning	2015-07-16 15:50:31	Video Loss Happened[1]
	CAM2311	Success	2015-07-16 15:50:31	Video Recover Happened[1]
	CAM241P	Warning	2015-07-16 15:49:36	Video Loss Happened[1]
	CAM241P	Success	2015-07-16 15:49:36	Video Recover Happened[3]
	CAM1301	Success	2015-07-16 15:48:26	Video Recover Happened[2]
	CAM2311	Warning	2015-07-16 15:48:25	Video Loss Happened[1]
	CAM1301	Warning	2015-07-16 15:48:25	Video Loss Happened[2]
	CAM2311	Success	2015-07-16 15:48:25	Video Recover Happened[1]
	CAM142052-3	Warning	2015-07-16 15:48:15	Video Loss Happened[0]
	CAM7511	Warning	2015-07-16 15:47:45	Video Loss Happened[0]
	CAM7511	Success	2015-07-16 15:47:45	Video Recover Happened[0]

Conclusion

SurveOne has many brilliant features.

- ✧ NVR/camera system status overview
- ✧ NVR device/network/storage real-time status monitoring
- ✧ Camera real-time status monitoring
- ✧ Easy NVR/camera configuration copy
- ✧ Easy NVR/camera configuration backup/restore
- ✧ NVR/camera real-time event log information
- ✧ Critical error/error/warning multi-level event classifications

Appendix: Data reference

SurveOne introduction website.

http://www.surveon.com/product/NVR_surveone.asp