



## **NVR3308 Failover**

**Application Notes**

**Version <1.0>**

## Preface

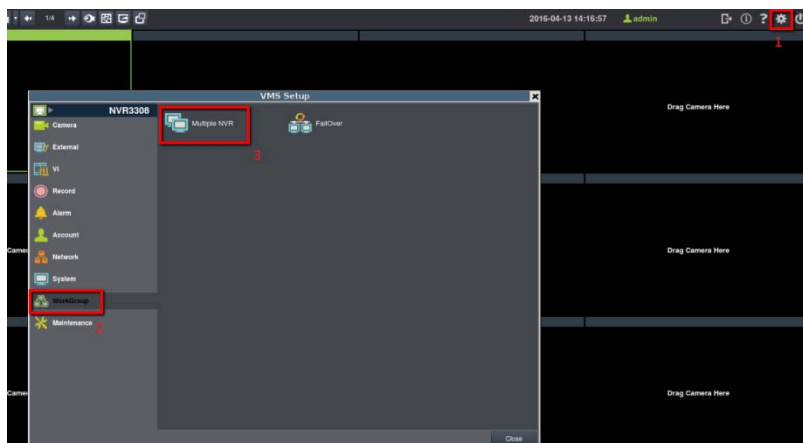
This application note can instruct user how to setup failover function and how to identify whether the failover function is enabled or not.

Product Series	Version
Surveon Linux base NVR	<b>4.0 or above version</b>

# 1. Protected Server setup

Add Failover server into Protected Server, so the failover server's live view / playback can be viewed in the protected server.

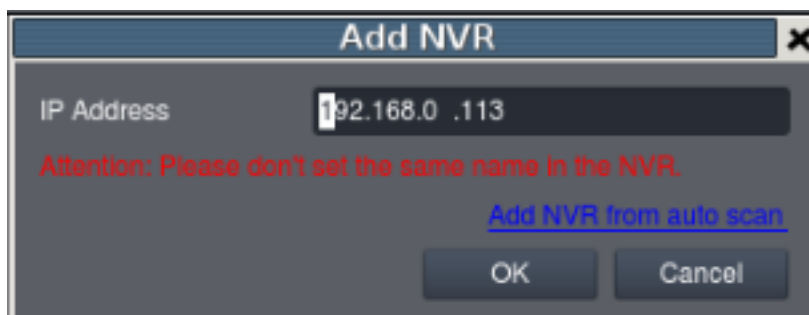
(1) Please enter Setup → WorkGroup → Multiple NVR.



(2) Please press “Add” to add recording server (**Failover server**).



(3) Enter **Failover server's** IP, and press “OK”.



(4) Please enter login account and password of the recording server (failover server).

**Add NVR** [X]

Account: admin

Password: ●●●●●●

OK Cancel

(5) You can see the recording server (failover server) on the list.

**Multiple NVR** [X]

NVR Name	IP Address	Model	License	Version	Online
192.168.1.10	192.168.1.10	4400	01	4.2.1.001	Yes

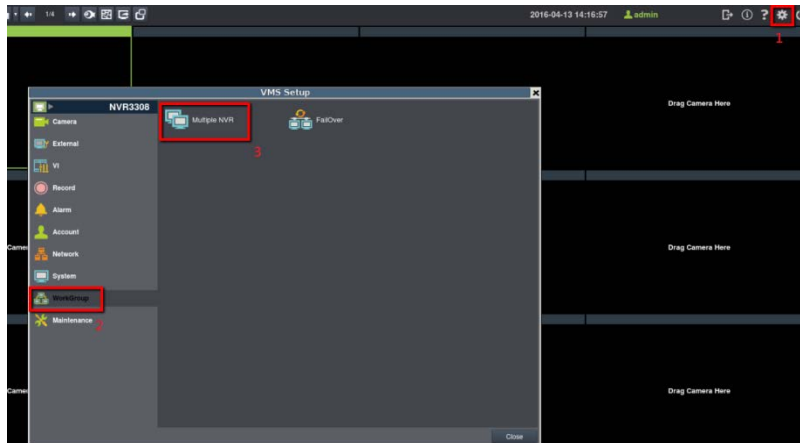
Refresh Add Delete Close

## 2. Failover server setup

### 2.1 Add Protected Server into Failover server

Add protected server into failover Server, so the protected server's live view / playback can be viewed in the Failover server.

(1) Please enter Setup → WorkGroup → Multiple NVR.



(2) Please press "Add" to add recording server (Protected Server).



(3) Enter **Protected Server's** IP, and press "OK".



IP Address: 192.168.0.113

Attention: Please don't set the same name in the NVR.

[Add NVR from auto scan](#)

OK Cancel

(4) Please enter the login account and password of the protected server.




Account: admin

Password: ●●●●●

OK Cancel

(5) You can see your **Protected Server** on the list.

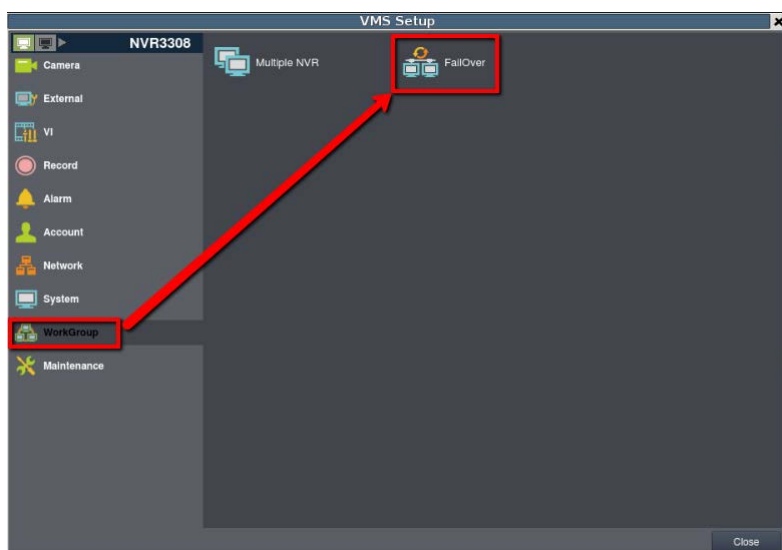


NVR Name	IP Address	Model	License	Version	Online
Protected	192.168.0.113	4042	00	4.0.3.001	Yes

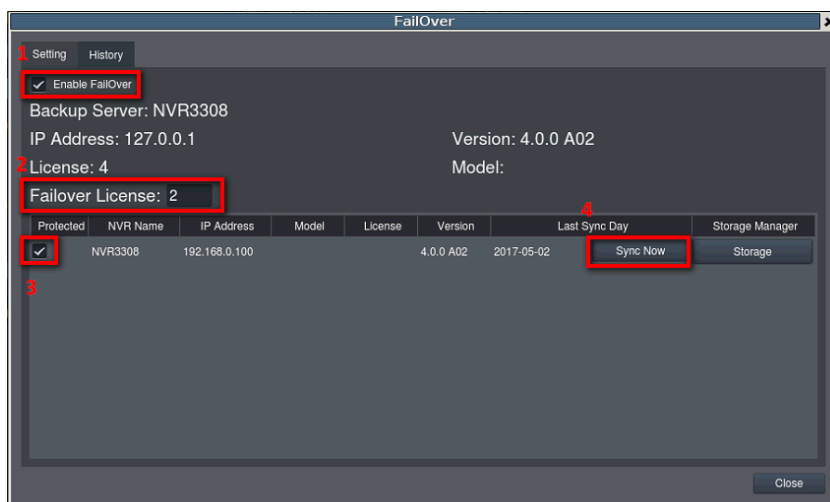
Refresh Add Delete Close

## 2.2 Enable FailOver function in failover server

(1) In failover server, please enter Setup → WorkGroup → FailOver.



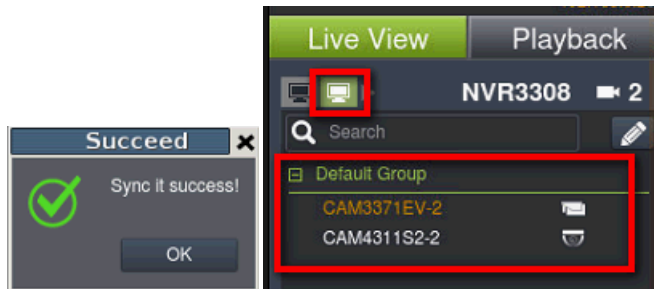
(2) Enable FailOver → Press Failover License → Choose the NVR(s) you want to protect → Press “Sync Now” to Sync these NVR.



### Note:

1. User can manually adjust how many licenses for failover and for live view.  
e.g. There are total 10 licenses for Failover server, if 6 CHs are assigned for failover, it indicates that there are only 4 CHs for live view in failover server.
2. “Failover license” indicates the numbers of channel user(s) you want to protect when failover happened.  
e.g. If failover server assigned 6 CHs for failover license, but there are 10 x cameras in the protected server on line, when failover happened, only the first 6CHs will be protected by failover server.

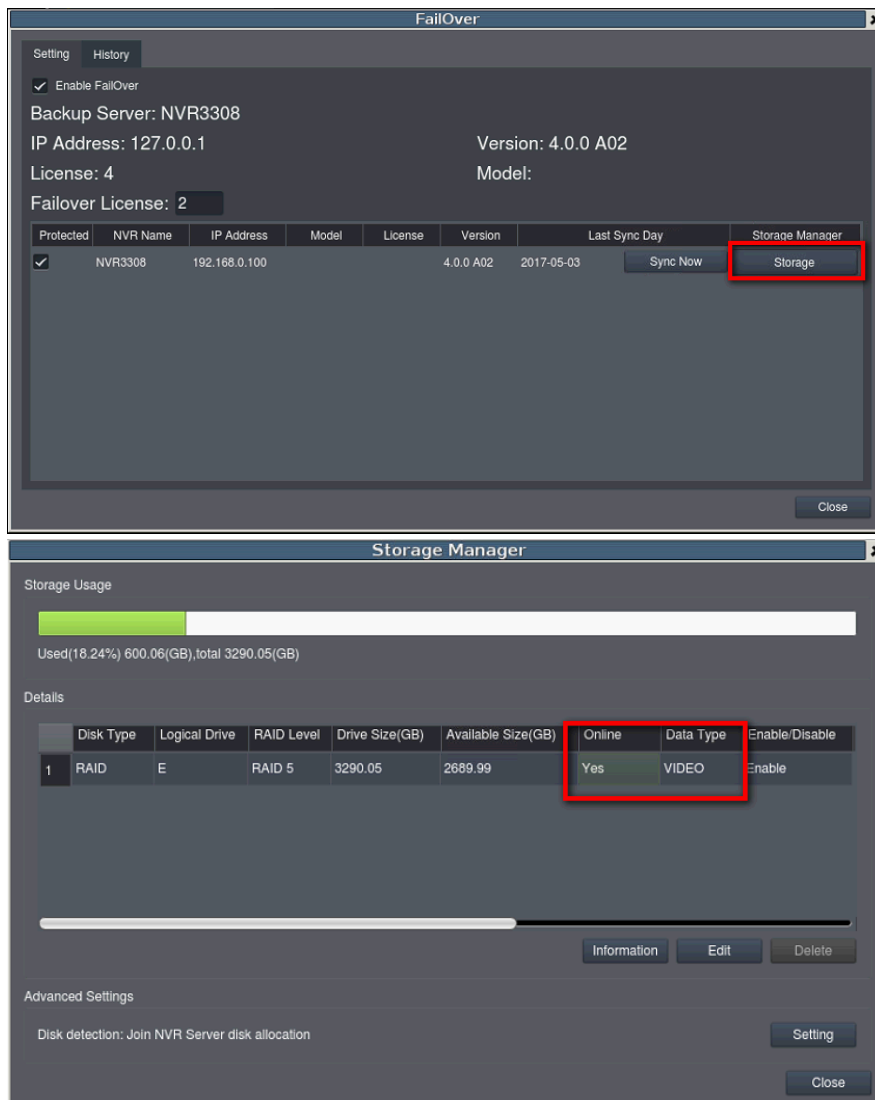
(3) If “sync” succeeded, failover server will show the camera list of protected server, also failover server will sync all protected server’s config inside.



(4) Press “Storage” and assign the drive that the video will be recorded to when failover happens.

**Note:** We recommend to separated failover record and normal record to different storage folder to easier management record file.

e.g. folder E for NVR normal record, folder F for failover record.





### 3. Protected server offline and Failover server enable

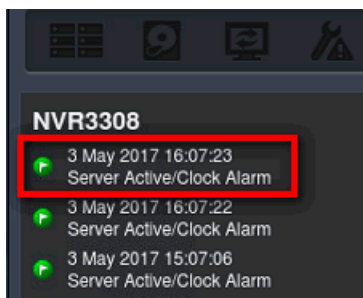
#### FailOver

When failover happened, it will take 2 to 4 minutes for the failover server to take up the record.

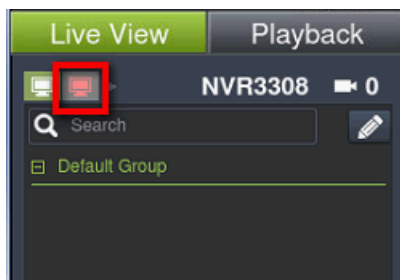
**Note:** This is only available when the videos are recorded to local drives. If user set up to record to iSCSI drives, it will take about 15 minutes to take up the record.

#### When failover happen:

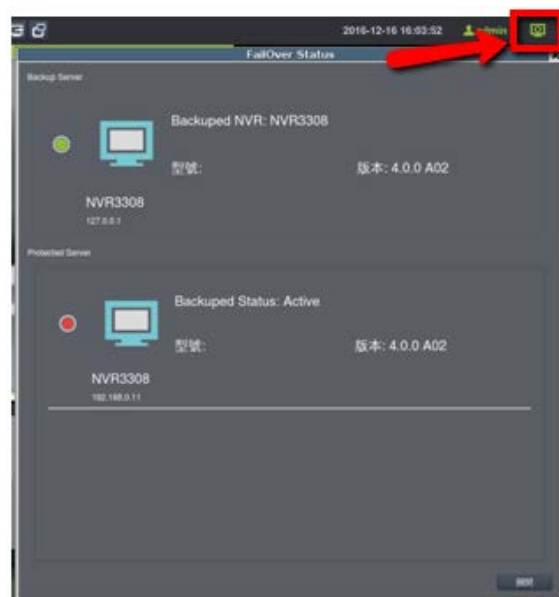
1. Log : Show Server Active/Clock Alarm



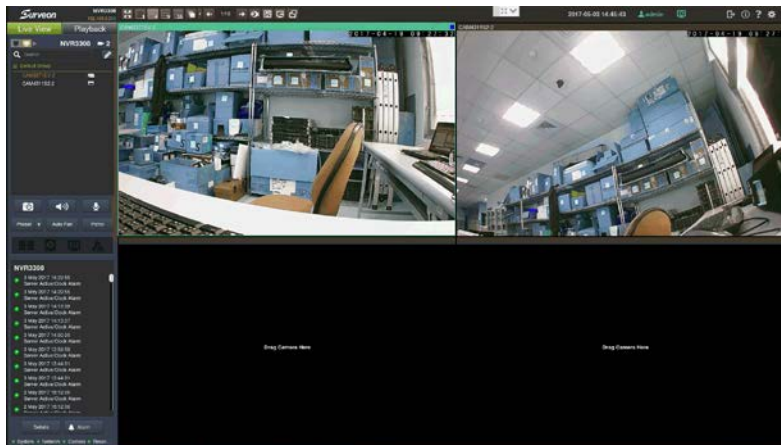
2. The protected server icon will turn into red.



3. Failover icon will start to flash and the protected server will turn into red.



(1) Failover server takes up the live view for protected server.



(2) Failover server takes up the play back for protected server. When failover happened, the time bar will turn into blue.

