

Network Camera - Premium Series

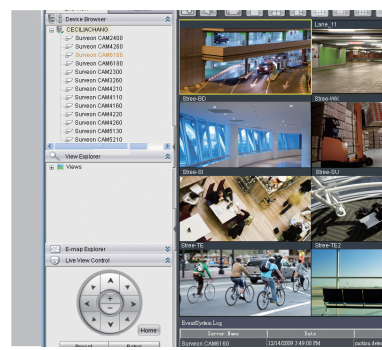
	Box Network Camera			Bullet Network Camera			Fisheye Network Camera	
Model Name	CAM23315P (23315C)	CAM24415C	CAM2511	CAM3371EM (3371EV)	CAM3471HEM (3471HEV)	CAM3571M (3571VP)	CAM4571RF	CAM7511
Description	2M P-Iris D/N IP Camera	3M Real-Time HDR D/N IP Camera	5M WDR D/N IP Camera	2M P-Iris D/N Bullet IP Camera	3M Real-Time HDR D/N Bullet IP Camera	5M WDR D/N Bullet IP Camera	5M D/N Outdoor Fisheye IP Camera	5M D/N Fisheye IP Camera
Image Sensor	1/2.8" SONY Exmor	1/3" Progressive Scan	1/2.5" Progressive Scan	1/2.8" SONY Exmor	1/3" Progressive Scan	1/2.5" Progressive Scan	1/2.5" Progressive Scan	1/2.5" Progressive Scan
Lens	f3.0-10.5 mm P-Iris, F1.4 (CS Mount)	Changeable (CS/C Mount)	Changeable (CS/C Mount)	f3-10.5 mm Autofocus, F1.4 (f3-10.5 mm Varifocal, F1.4)	f3-10.5 mm Autofocus, F1.4 (f3-10.5 mm Varifocal, F1.4)	f4.5-9 mm Autofocus, F1.2 (f3-10.5 mm P-Iris, F1.4)	f1.37 mm, F2.0	f1.05 mm, F2.8
Day/Night ICR	Yes	Yes	Yes	Yes	Yes	Yes	Yes	Yes
IR LED	N/A	N/A	N/A	Yes (Max. 30M)	Yes (Max. 30M)	Yes (Max. 30M)	N/A	N/A
Min Illumination	0.05 Lux @ F1.4	0.1 Lux @ F1.2	0.1 Lux @ F1.2	0.05 Lux @ F1.4	0.1 Lux @ F1.2	0.1 Lux @ F1.2	0.1 Lux @ F2.0	0.1 Lux @ F2.8
Iris Control	P-Iris (DC Drive)	DC Drive	DC Drive	P-Iris	P-Iris	DC Drive (P-Iris)	Fixed	Fixed
Video Compression	H.264/MPEG-4/MJPEG	H.264/MPEG-4/MJPEG	H.264/MPEG-4/MJPEG	H.264/MPEG-4/MJPEG	H.264/MPEG-4/MJPEG	H.264/MPEG-4/MJPEG	H.264/MPEG-4/MJPEG	H.264/MPEG-4/MJPEG
Video FPS	30 fps (1920 x 1080)	30 fps (2048 x 1536)	14 fps (2560 x 1920)	30 fps (1920 x 1080)	30 fps (2048 x 1536)	14 fps (2560 x 1920)	12 fps (2560 x 1920)	14 fps (2560 x 1920)
Video Control	AGC, AWB, AES, BLC, WDR, 2D/3D NR, ROI	AGC, AWB, AES, BLC, HDR, 2D/3D NR, ROI	AGC, AWB, AES, BLC, WDR, 2D/3D NR, ROI	AGC, AWB, AES, BLC, WDR, 2D/3D NR, ROI	AGC, AWB, AES, BLC, HDR, 2D/3D NR, ROI	AGC, AWB, AES, BLC, WDR, 2D/3D NR, ROI	AGC, AWB, AES, BLC, WDR, 2D/3D NR, ROI	AGC, AWB, AES, BLC, WDR, 2D/3D NR, ROI
Audio	2 Way Audio	2 Way Audio	2 Way Audio	2 Way Audio (optional)	2 Way Audio (optional)	2 Way Audio (optional)	N/A	Built-in MIC (2 way optional)
Alarm In/Out	1/1	1/1	1/1	1/1 (optional)	1/1 (optional)	1/1 (optional)	N/A	1/1 (optional)
Local Storage	microSD/SDHC x 1	microSD/SDHC x 1	microSD/SDHC x 1	microSD/SDHC x 1	microSD/SDHC x 1	microSD/SDHC x 1	microSD/SDHC x 1	microSD/SDHC x 1
Power	12VDC:PoE with Class 3	12VDC:PoE with Class 3	12VDC:PoE with Class 3	12VDC:PoE with Class 3	12VDC:PoE with Class 3	12VDC:PoE with Class 3	PoE with Class 3	12VDC:PoE with Class 3
Certification	LVD, FCC, CE	LVD, FCC, CE	LVD, FCC, CE, GOST	LVD, FCC, CE, IP66	LVD, FCC, CE, IP66	LVD, FCC, CE, IP66, GOST	LVD, FCC, CE, IP67, IK10	LVD, FCC, CE, GOST

	Outdoor Fixed Dome Network Camera			PT/PTZ Dome Network Camera				
Model Name	CAM4371HEM (4371HEV)	CAM4471HEM (4471HEV)	CAM4571M (4571VP)	CAM5330SZ	CAM6181	CAM6351	CAM6351A	CAM6351B
Description	2M Real WDR D/N Outdoor IP Fixed Dome	3M Real-Time HDR D/N Outdoor IP Fixed Dome	5M WDR D/N Outdoor IP Fixed Dome	2M 10x Zoom IP PTZ Dome	36x Zoom D/N Outdoor IP Speed Dome	20x Zoom 2M D/N Outdoor IP Speed Dome	20x Zoom 2M D/N Outdoor IP Speed Dome	30x Zoom 2M D/N Outdoor IP Speed Dome
Image Sensor	1/2.8" SONY Exmor	1/3" Progressive Scan	1/2.5" Progressive Scan	1/2.7" Progressive Scan	1/2.8" SONY CCD	1/2.8" SONY Exmor	1/2.8" SONY Exmor	1/2.8" SONY Exmor
Lens	f3-10.5 mm Autofocus, F1.4 (f3-10.5 mm Varifocal, F1.4)	f3-10.5 mm Autofocus, F1.4 (f3-10.5 mm Varifocal, F1.4)	f4.5-9 mm Autofocus, F1.2 (f3-10.5 mm P-Iris, F1.4)	f4.9-49mm Autofocus, F1.8-3.0	f3.4-122.4 mm Autofocus, F1.6(W) - F4.5(T), 36x Zoom	f4.7-94 mm Autofocus, F1.6(W) - F3.7(T), 20x Zoom	f4.7-94 mm Autofocus, F1.6(W) - F3.7(T), 20x Zoom	f4.3-129 mm Autofocus, F1.6(W) - F3.7(T), 30x Zoom
Day/Night ICR	Yes	Yes	Yes	N/A	N/A	N/A	N/A	N/A
IR LED	Yes (Max. 30M)	Yes (Max. 30M)	Yes (Max. 30M)	N/A	N/A	N/A	N/A	N/A
Min Illumination	0.05 Lux @ F1.4	0.1 Lux @ F1.2	0.1 Lux @ F1.2	0.5 Lux @ F2.0	0.01 Lux @ F1.6	0.5 Lux @ F1.6	0.5 Lux @ F1.6	0.5 Lux @ F1.6
Iris Control	P-Iris	P-Iris	DC Drive (P-Iris)	DC Drive	Automatic	Automatic	Automatic	Automatic
Video Compression	H.264/MPEG-4/MJPEG	H.264/MPEG-4/MJPEG	H.264/MPEG-4/MJPEG	H.264/MPEG-4/MJPEG	H.264/MJPEG	H.264/MJPEG	H.264/MJPEG	H.264/MJPEG
Video FPS	60 fps (1920 x 1080)	30 fps (2048 x 1536)	14 fps (2560 x 1920)	30 fps (1920 x 1080)	30 fps (720 x 480)	30 fps (1920 x 1080)	30 fps (1920 x 1080)	30 fps (1920 x 1080)
Video Control	AGC, AWB, AES, BLC, Real WDR, 2D/3D NR, ROI	AGC, AWB, AES, BLC, HDR, 2D/3D NR, ROI	AGC, AWB, AES, BLC, WDR, 2D/3D NR, ROI	AGC, AWB, AES, WDR, 2D/3D NR, ROI	AGC, AWB, AES, BLC, WDR	AGC, AWB, AES, BLC, WDR	AGC, AWB, AES, BLC, Real WDR, 2D/3D NR	AGC, AWB, AES, BLC, Real WDR, 2D/3D NR
Audio	2 Way Audio (optional)	2 Way Audio (optional)	2 Way Audio (optional)	1 Way Audio	2 Way Audio	2 Way Audio	2 Way Audio	2 Way Audio
Alarm In/Out	1/1 (optional)	1/1 (optional)	1/1 (optional)	1/1	4/2	4/2	4/2	4/2
Local Storage	microSD/SDHC x 1	microSD/SDHC x 1	microSD/SDHC x 1	SD x 1	microSD/SDHC x 1	microSD/SDHC x 1	microSD/SDHC x 1	microSD/SDHC x 1
Power	12VDC:PoE with Class 3	12VDC:PoE with Class 3	12VDC:PoE with Class 3	12VDC:PoE with Class 3	24VAC, HPoE 30W	24VAC, HPoE 30W	24VAC, PoE+ 60W	24VAC, PoE+ 60W
Certification	LVD, FCC, CE, IP66, IK10	LVD, FCC, CE, IP66, IK10	LVD, FCC, CE, IP66, GOST, IK10	FCC, CE	LVD, FCC, CE, IP66	LVD, FCC, CE, IP66, GOST, KCC	LVD, FCC, CE, IP66	LVD, FCC, CE, IP66

Network Camera - Professional Series

	Box Network Camera		Bullet Network Camera			PT/PTZ Dome	Indoor Fixed Dome Network Camera	
Model Name	CAM23115C	CAM25115C	CAM3351R4 (3351R6)	CAM3361LV	CAM3461LV	CAM532154	CAM132052	CAM142052
Description	2M D/N Compact IP Camera	5M D/N Compact IP Camera	2M WDR D/N Bullet IP Camera	2M WDR D/N Bullet IP Camera	3M WDR D/N Bullet IP Camera	2M Compact D/N IP PT Dome	2M Compact IP Fixed Dome	3M Compact IP Fixed Dome
Image Sensor	1/2.8" SONY Exmor	1/2.5" Progressive Scan	1/2.8" SONY Exmor	1/2.8" SONY Exmor	1/2.5" Progressive Scan	1/2.7" Progressive Scan	1/3" Progressive Scan	1/3" Progressive Scan
Lens	Changeable (CS/C Mount)	Changeable (CS/C Mount)	f4.2 mm, F1.8 (f6.0 mm, F2.0)	f3-10.5 mm Varifocal, F1.4	f3-10.5 mm Varifocal, F1.4	f4.0 mm, F2.0	f2.8 mm, F1.8	f2.8 mm, F1.8
Day/Night ICR	Yes	Yes	Yes	Yes	Yes	Yes	N/A	N/A
IR LED	N/A	N/A	Yes (20M)	Yes (20M)	Yes (20M)	Yes (10M)	N/A	N/A
Min Illumination	0.1 Lux @ F1.2	0.1 Lux @ F1.2	0.1 Lux @ F1.4	0.1 Lux @ F1.4	0.1 Lux @ F1.4	0.5 Lux @ F2.0	0.1 Lux @ F1.8	0.1 Lux @ F1.8
Iris Control	DC Drive	DC Drive	Fixed	Auto Electronic	Auto Electronic	DC Drive	Fixed	Fixed
Video Compression	H.264/MPEG-4/MJPEG	H.264/MPEG-4/MJPEG	H.264/MPEG-4/MJPEG	H.264/MPEG-4/MJPEG	H.264/MPEG-4/MJPEG	H.264/MPEG-4/MJPEG	H.264/MPEG-4/MJPEG	H.264/MPEG-4/MJPEG
Video FPS	30 fps (1920 x 1080)	12 fps (2560 x 1920)	30 fps (1920 x 1080)	30 fps (1920 x 1080)	20 fps (2048 x 1536)	30 fps (1920 x 1080)	30 fps (1920 x 1080)	25 fps (2048 x 1536)
Video Control	AGC, AWB, AES, BLC, WDR, 2D/3D NR, ROI	AGC, AWB, AES, BLC, WDR, 2D/3D NR, ROI	AGC, AWB, AES, BLC, WDR, 2D/3D NR, ROI	AGC, AWB, AES, BLC, WDR, 2D/3D NR, ROI	AGC, AWB, AES, BLC, WDR, 2D/3D NR, ROI	AGC, AWB, AES, WDR, 2D/3D NR, ROI	AGC, AWB, AES, WDR, 2D/3D NR	AGC, AWB, AES, WDR, 2D/3D NR
Audio	2 Way Audio	2 Way Audio	N/A	N/A	N/A	Built-in MIC	Built-in MIC	Built-in MIC
Alarm In/Out	1/1	1/1	N/A	N/A	N/A	N/A	N/A	N/A
Local Storage	microSD/SDHC x 1	microSD/SDHC x 1	microSD/SDHC x 1	microSD/SDHC x 1	microSD/SDHC x 1	microSD x 1	N/A	N/A
Power	PoE with Class 3	PoE with Class 3	PoE with Class 3	PoE with Class 3	PoE with Class 3	12VDC:PoE with Class 3	PoE with Class 3	PoE with Class 3
Certification	LVD, FCC, CE	LVD, FCC, CE	LVD, FCC, CE, IP66	LVD, FCC, CE, IP66	LVD, FCC, CE, IP66	FCC, CE	LVD, FCC, CE	LVD, FCC, CE

	Indoor Fixed Dome Network Camera				Outdoor Fixed Dome Network Camera			
Model Name	CAM431152	CAM4321LV	CAM4421LV	CAM4521LV	CAM4351R2	CAM4361LV	CAM4461LV	CAM4561LV
Description	2M 3-Axis D/N IP Fixed Dome	2M 3-Axis D/N IP Fixed Dome	3M 3-Axis D/N IP Fixed Dome	5M 3-Axis D/N IP Fixed Dome	2M 3-Axis D/N Outdoor IP Fixed Dome	2M 3-Axis D/N Outdoor IP Fixed Dome	3M 3-Axis D/N Outdoor IP Fixed Dome	5M 3-Axis D/N Outdoor IP Fixed Dome
Image Sensor	1/2.8" SONY Exmor	1/2.8" SONY Exmor	1/2.5" Progressive Scan	1/2.5" Progressive Scan	1/2.8" SONY Exmor	1/2.8" SONY Exmor	1/2.5" Progressive Scan	1/2.5" Progressive Scan
Lens	f2.8 mm, F1.8	f2.8-12 mm Varifocal, F1.4	f3-10.5 mm Varifocal, F1.4	f3-10.5 mm Varifocal, F1.4	f2.8 mm, F1.8	f2.8-12 mm Varifocal, F1.4	f3-10.5 mm Varifocal, F1.4	f3-10.5 mm Varifocal, F1.4
Day/Night ICR	Yes	Yes	Yes	Yes	Yes	Yes	Yes	Yes
IR LED	Yes (10M)	Yes (20M)	Yes (20M)	Yes (20M)	Yes (Max. 10M)	Yes (20M)	Yes (20M)	Yes (20M)
Min Illumination	0.1 Lux @ F1.8	0.1 Lux @ F1.4	0.1 Lux @ F1.4	0.1 Lux @ F1.4	0.1 Lux @ F1.8	0.1 Lux @ F1.4	0.1 Lux @ F1.4	0.1 Lux @ F1.4
Iris Control	Fixed	Auto Electronic	Auto Electronic	Auto Electronic	Fixed	Auto Electronic	Auto Electronic	Auto Electronic
Video Compression	H.264/MPEG-4/MJPEG	H.264/MPEG-4/MJPEG	H.264/MPEG-4/MJPEG	H.264/MPEG-4/MJPEG	H.264/MPEG-4/MJPEG	H.264/MPEG-4/MJPEG	H.264/MPEG-4/MJPEG	H.264/MPEG-4/MJPEG
Video FPS	30 fps (1920 x 1080)	30 fps (1920 x 1080)	20 fps (2048 x 1536)	12 fps (2560 x 1920)	30 fps (1920 x 1080)	30 fps (1920 x 1080)	20 fps (2048 x 1536)	12 fps (2560 x 1920)
Video Control	AGC, AWB, AES, BLC, WDR, 2D/3D NR, ROI	AGC, AWB, AES, WDR, 2D/3D NR, ROI	AGC, AWB, AES, BLC, WDR, 2D/3D NR, ROI	AGC, AWB, AES, BLC, WDR, 2D/3D NR, ROI	AGC, AWB, AES, BLC, WDR, 2D/3D NR, ROI	AGC, AWB, AES, BLC, WDR, 2D/3D NR, ROI	AGC, AWB, AES, BLC, WDR, 2D/3D NR, ROI	AGC, AWB, AES, BLC, WDR, 2D/3D NR, ROI
Audio	Built-in MIC (2 way optional)	Built-in MIC (2 way optional)	Built-in MIC (2 way optional)	Built-in MIC (2 way optional)	N/A	N/A	N/A	N/A
Alarm In/Out	1/1 (optional)	1/1 (optional)	1/1 (optional)	1/1 (optional)	N/A	N/A	N/A	N/A
Local Storage	microSD/SDHC x 1	microSD/SDHC x 1	microSD/SDHC x 1	microSD/SDHC x 1	microSD/SDHC x 1	microSD/SDHC x 1	microSD/SDHC x 1	microSD/SDHC x 1
Power	PoE with Class 3	PoE with Class 3	PoE with Class 3	PoE with Class 3	PoE with Class 3	PoE with Class 3	PoE with Class 3	PoE with Class 3
Certification	LVD, FCC, CE	LVD, FCC, CE	LVD, FCC, CE	LVD, FCC, CE	LVD, FCC, CE, IP67, IK10	LVD, FCC, CE, IP67, IK10	LVD, FCC, CE, IP67, IK10	LVD, FCC, CE, IP67, IK10



2015 Product Overview

- Enterprise NVR5000 Series
- Professional NVR3000 Series
- Tower SMR2110/5110/8300 Series
- Premium Megapixel Camera Series
- Professional Megapixel Camera Series



Network Video Recorder - Enterprise NVR5000 Series

NVR5316E1 Series



Model Series	NVR5316E1-16	NVR5316E1-24	NVR5316E1-32
Description	16 Bay Rackmount RAID NVR		
No. Cam Support	16 CH Megapixel	24 CH Megapixel	32 CH Megapixel
Recording Days over CH*	171 Days	114 Days	85 Days
RAID Level	Non-RAID, RAID 1, 5, 6		
Local Live View	1x D-Sub / 2x HDMI		
Recording Throughput	192Mbps		
Video Management Solution	Surveon Enterprise Video Management Software (Client/Server Architecture, Live View, On Screen PTZ, HTML Overlay, Playback, Real-time Video Analytics, Alarm Event Handling, Web Client, Remote Client, Centralized Domain Management, Multiple LAN, iPhone Client, Android Client)		
Storage Integration	Integration & Installation Free (Automatic Management by Surveon VMS Suite)		
Dimension	130(H) x 448(W) x 500(D) mm		
Weight	21.54 Kg		
Warranty	3 Years		
Certification	UL, CB, FCC/CE Class A		

NVR5316A1 Series

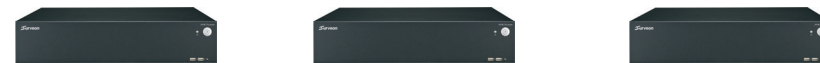


Model Series	NVR5316A1-16	NVR5316A1-24	NVR5316A1-32	NVR5316A1-48	NVR5316A1-64
Description	16 Bay Rackmount RAID NVR				
No. Cam Support	16 CH Megapixel	24 CH Megapixel	32 CH Megapixel	48 CH Megapixel	64 CH Megapixel
Recording Days over CH*	171 Days	114 Days	85 Days	57 Days	42 Days
RAID Level	Non-RAID, RAID 1, 5, 6				
Local Live View	1x D-Sub / 2x HDMI				
Recording Throughput	384Mbps				
Video Management Solution	Surveon Enterprise Video Management Software (Client/Server Architecture, Live View, On Screen PTZ, HTML Overlay, Playback, Real-time Video Analytics, Alarm Event Handling, Web Client, Remote Client, Centralized Domain Management, Multiple LAN, iPhone Client, Android Client)				
Storage Integration	Integration & Installation Free (Automatic Management by Surveon VMS Suite)				
Dimension	130(H) x 448(W) x 500(D) mm				
Weight	21.54 Kg				
Warranty	3 Years				
Certification	UL, CB, FCC/CE Class A				

* Based on 4TB HDD, 2Mbps bit rate, 24 hr recording, RAID 5 best data protection (Non-RAID for 2 Bay).
 • IP Cam Vendor Support: ACTi, Arecont Vision, AXIS, BOSCH, Dahua, Dynacolor, EDIMAX, EverFocus, FlexWATCH (Seyeon), HIKVISION, IQinvision, JVC, Mobotix, Panasonic, Surveon.
 • All specifications are subject to change without notice.

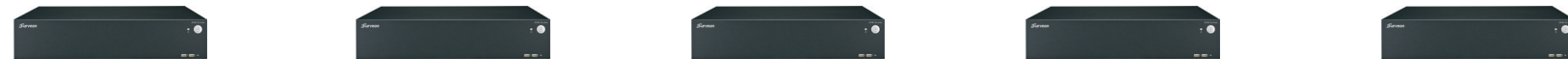
Network Video Recorder - Professional NVR3000 Series

NVR3104 Series



Model Series	NVR3104-4	NVR3104-9	NVR3104-16	NVR3308E1-16	NVR3308E1-24	NVR3308E1-32
Description	4 Bay RAID NVR			8 Bay RAID NVR		
No. Cam Support	4 CH Megapixel	9 CH Megapixel	16 CH Megapixel	16 CH Megapixel	24 CH Megapixel	32 CH Megapixel
Recording Days over CH*	137 Days	61 Days	34 Days	80 Days	53 Days	40 Days
RAID Level	Non-RAID, RAID 1, 5, 6			Non-RAID, RAID 1, 5, 6		
Local Live View	1x VGA / 1x HDMI			1x VGA / 1x HDMI		
Recording Throughput	96Mbps			192Mbps		
Video Management Solution	Surveon Enterprise Video Management Software (Client/Server Architecture, Live View, On Screen PTZ, HTML Overlay, Playback, Real-time Video Analytics, Alarm Event Handling, Web Client, Remote Client, Centralized Domain Management, Multiple LAN, iPhone Client, Android Client)					
Storage Integration	Integration & Installation Free (Automatic Management by Surveon VMS Suite)					
Dimension	430(W) x 390(D) x 88(H)mm			430(W) x 390(D) x 88(H)mm		
Weight	9 Kg			9 Kg		
Warranty	2 Years			2 Years		
Certification	UL, CB, FCC / CE Class A			UL, CB, FCC / CE Class A		

NVR3308A1 Series



Model Series	NVR3308A1-16	NVR3308A1-24	NVR3308A1-32	NVR3308A1-48	NVR3308A1-64
Description	8 Bay RAID NVR				
No. Cam Support	16 CH Megapixel	24 CH Megapixel	32 CH Megapixel	48 CH Megapixel	64 CH Megapixel
Recording Days over CH*	80 Days	53 Days	40 Days	26 Days	20 Days
RAID Level	Non-RAID, RAID 1, 5, 6				
Local Live View	1x VGA / 1x HDMI				
Recording Throughput	384Mbps				
Video Management Solution	Surveon Enterprise Video Management Software (Client/Server Architecture, Live View, On Screen PTZ, HTML Overlay, Playback, Real-time Video Analytics, Alarm Event Handling, Web Client, Remote Client, Centralized Domain Management, Multiple LAN, iPhone Client, Android Client)				
Storage Integration	Integration & Installation Free (Automatic Management by Surveon VMS Suite)				
Dimension	430(W) x 390(D) x 88(H)mm				
Weight	9 Kg				
Warranty	2 Years				
Certification	UL, CB, FCC / CE Class A				

* Based on 4TB HDD, 2Mbps bit rate, 24 hr recording, RAID 5 best data protection (Non-RAID for 2 Bay).
 • IP Cam Vendor Support: ACTi, Arecont Vision, AXIS, BOSCH, Dahua, Dynacolor, EDIMAX, EverFocus, FlexWATCH (Seyeon), HIKVISION, IQinvision, JVC, Mobotix, Panasonic, Surveon.
 • All specifications are subject to change without notice.

Network Video Recorder - Tower SMR Series

SMR2110 Series



Model Series	SMR2110-4	SMR2110-9	SMR2110-16	SMR2110-24	SMR2110-32	SMR5110-16	SMR5110-24	SMR5110-32
Description	2 Bay RAID NVR					5 Bay RAID NVR		
No. Cam Support	4 CH Megapixel	9 CH Megapixel	16 CH Megapixel	24 CH Megapixel	32 CH Megapixel	16 CH Megapixel	24 CH Megapixel	32 CH Megapixel
Recording Days over CH*	90 Days	40 Days	22 Days	15 Days	11 Days	45 Days	30 Days	22 Days
RAID Level	Non-RAID, RAID 1					Non-RAID, RAID 1, 5, 6		
Local Live View	1x DVI-I					1x DVI-I		
Recording Throughput	192Mbps					192Mbps		
Video Management Solution	Surveon Enterprise Video Management Software (Client/Server Architecture, Live View, On Screen PTZ, HTML Overlay, Playback, Real-time Video Analytics, Alarm Event Handling, Web Client, Remote Client, Centralized Domain Management, Multiple LAN, iPhone Client, Android Client)							
Storage Integration	Integration & Installation Free (Automatic Management by Surveon VMS Suite)							
Dimension	190(H) x 110(W) x 245(D) mm					225(H) x 175(W) x 245(D) mm		
Weight	3 Kg					5 Kg		
Warranty	3 Years					3 Years		
Certification	FCC / CE Class A					FCC / CE Class A		

• Available soon: SMR2110 series, SMR5110 series.

SMR8300E Series



Model Series	SMR8300E-16	SMR8300E-24	SMR8300E-32	SMR8300A-16	SMR8300A-24	SMR8300A-32	SMR8300A-48	SMR8300A-64
Description	8 Bay RAID NVR			8 Bay RAID NVR				
No. Cam Support	16 Megapixel	24 Megapixel	32 CH Megapixel	16 CH Megapixel	24 CH Megapixel	32 CH Megapixel	48 CH Megapixel	64 CH Megapixel
Recording Days over CH*	80 Days	53 Days	40 Days	80 Days	53 Days	40 Days	26 Days	20 Days
RAID Level	Non-RAID, RAID 1, 5, 6			Non-RAID, RAID 1, 5, 6				
Local Live View	1x VGA / 1x HDMI			1x VGA / 1x HDMI				
Recording Throughput	192Mbps			384Mbps				
Video Management Solution	Surveon Enterprise Video Management Software (Client/Server Architecture, Live View, On Screen PTZ, HTML Overlay, Playback, Real-time Video Analytics, Alarm Event Handling, Web Client, Remote Client, Centralized Domain Management, Multiple LAN, iPhone Client, Android Client)							
Storage Integration	Integration & Installation Free (Automatic Management by Surveon VMS Suite)							
Dimension	310(H) x 175(W) x 380(D) mm			310(H) x 175(W) x 380(D) mm				
Weight	9 Kg			9 Kg				
Warranty	3 Years			3 Years				
Certification	CB, FCC / CE Class B, UL60959/ IEC 60950			CB, FCC / CE Class B, UL60959/ IEC 60950				

* Based on 4TB HDD, 2Mbps bit rate, 24 hr recording, RAID 5 best data protection (Non-RAID for 2 Bay).
 • IP Cam Vendor Support: ACTi, Arecont Vision, AXIS, BOSCH, Dahua, Dynacolor, EDIMAX, EverFocus, FlexWATCH (Seyeon), HIKVISION, IQinvision, JVC, Mobotix, Panasonic, Surveon.
 • All specifications are subject to change without notice.