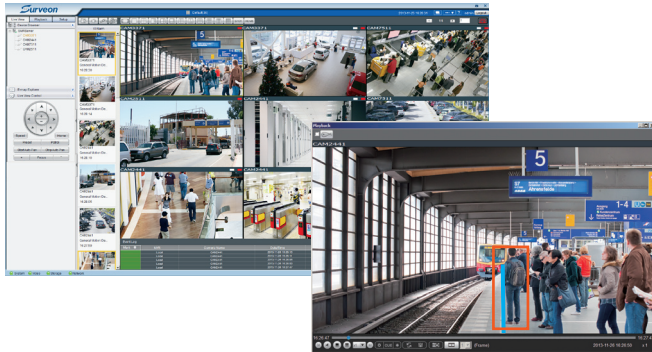


Surveon Intelligence Video Analytics



Key Features

- Superior Detection Capabilities
- Wide Range of Detection Functions
- Active Alarm and Event Handling
- Smart and Powerful Investigative Modes
- Actionable Monitoring via Event Bookmark
- Highly Scalable with Distributed Architecture

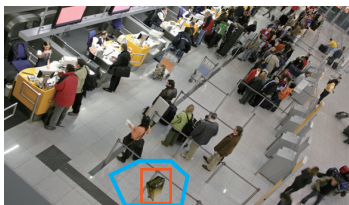
Surveon VA is a real-time video analytics solution that turns standard surveillance into an intelligent system. By performing the real-time analysis of the video stream, Surveon VA identifies and initiates alerts for various user-defined events, offering effective monitorings, detections, alerts, and responses to events for a variety of applications.

Feature Highlights



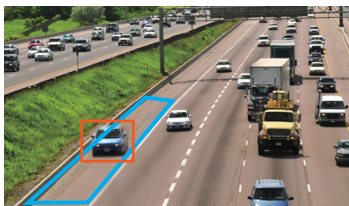
Missing Object Detection

When something was there but then disappeared, it will trigger alarm. This can be used for assets protection in places such as stores, shops, and galleries with valuable items.



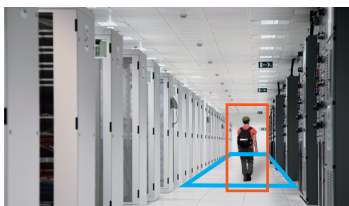
Foreign Object Detection

This functionality is the opposite of the missing object detection for detecting what was not there but then strangely appeared. It can be utilized to reduce misplacement or deliberate abandonment in public areas such as transportation stations and critical infrastructure.



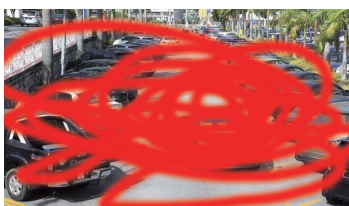
Intrusion Detection

It detects malicious activities, policy violations or invasion; once detected, it will trigger alarm. It can be used in places where safety and security are top priorities, for example campuses and warehouses.



Forbidden Area Detection

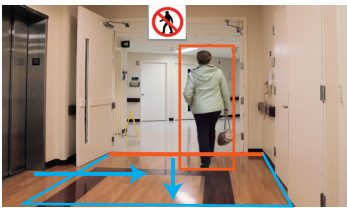
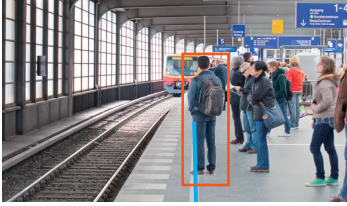
Setting a detection zone as forbidden means there should be no trespasses in the set area; any incoming will trigger alarm. It can be applied for places where perimeter security is required.



Tampering Detection

This functionality is used for detecting any damage or external changes on the camera, for example being redirected, defocused, blocked or spray-painted. Any obstruction on the camera will trigger alarm.

Feature Highlights



Virtual Fence

Setting a virtual fence means drawing a line that should not be crossed; it will trigger alarm when the line is crossed. It can be employed in places where crossing will cause damage, for example station platforms.

Object Counting

After setting a line, direction and the object size, Surveon VA will count the numbers when people or things cross the line. This can be utilized in places where managing the space and counting the flow are needed, for example parking lots and shopping malls.

Tailgating Detection

The alarm will be triggered, when an object moves in the same direction but does not stop or stays too close to the previous one when crossing the dividing line in the detecting area. This can be used when the act of passing through needs to be charged or in access control, for example parking lots, toll booths, and the ATM.

Going Out Detection

By setting a detection area, boundaries and the object size, objects can move around in the set detection area but cannot cross the set boundaries; otherwise it will trigger alarm. This can be applied for entrance management.

Direction

This functionality is to detect directions other than the configured one (within the limits of the acceptance angle); any wrong direction will trigger alarm. It can be employed for places where only one direction is allowed, for example parking lots.

Surveon VA Packages

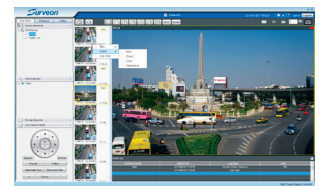
VA Function	VMS Professional	VMS Enterprise	SCC
General Motion Detection	v	v	v
Missing Object Detection		v	v
Foreign Object Detection		v	v
Intrusion Detection		v	v
Forbidden Area Detection		v	v
Tampering Detection		v	v
Virtual Fence		v	v
Object Counting		v	v
Tailgating Detection		v	v
Go Out Detection		v	v
Direction		v	v

UI Panel & Smart Investigation

Actionable Monitoring



Real-time VI Panel



Actionable Bookmark

Smart Investigation



Event Search



Case-based Investigation