



How to Replace 2.5" OS HDD for NVR7316 and Restore to Factory Default

Application Notes

Version <1.0>



Preface

This application note can instruct user to restore your **NVR7316** system to factory default step by step by replacing the **2.5" OS HDD**.

Caution

Restore to Factory default will **clean all configuration and delete ALL video DATA**.

Please make sure you have already backed up the required data.

Scope

Product model	Firmware version
NVR7316	Full version

There are 4 steps in total, you can find each step in the following pages.

Step 1. Replace the 2.5" OS HDD

Step 2. **Power on NVR7316, and destroy RAID**

Step 3. Create RAID by EonOneLite

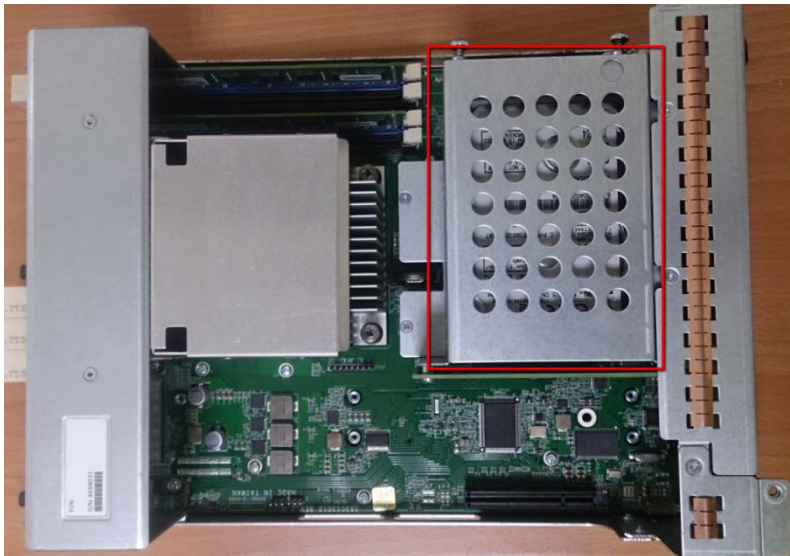
Step 4. Active the license

Step 1. Replace the 2.5" OS HDD

1. Power off the NVR7316.
2. Pull the controller out and replace the new 2.5" OS HDD.
The location of the controller shown as below.



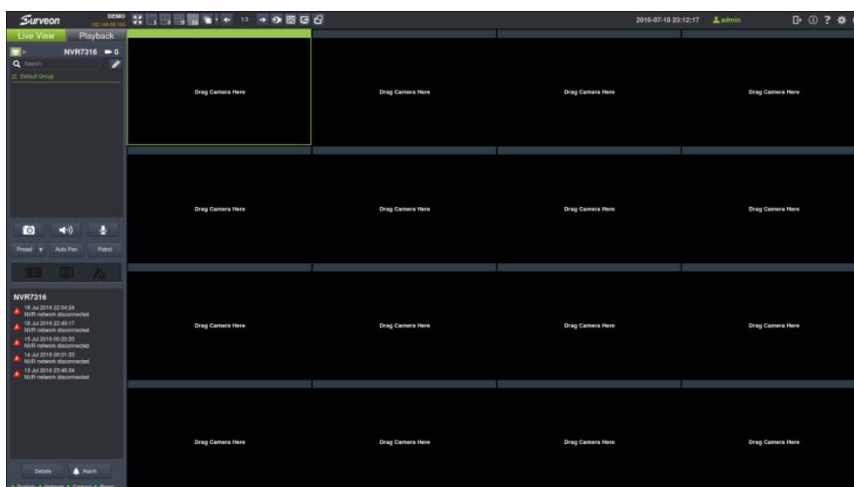
The location of 2.5" HDD shown as below.



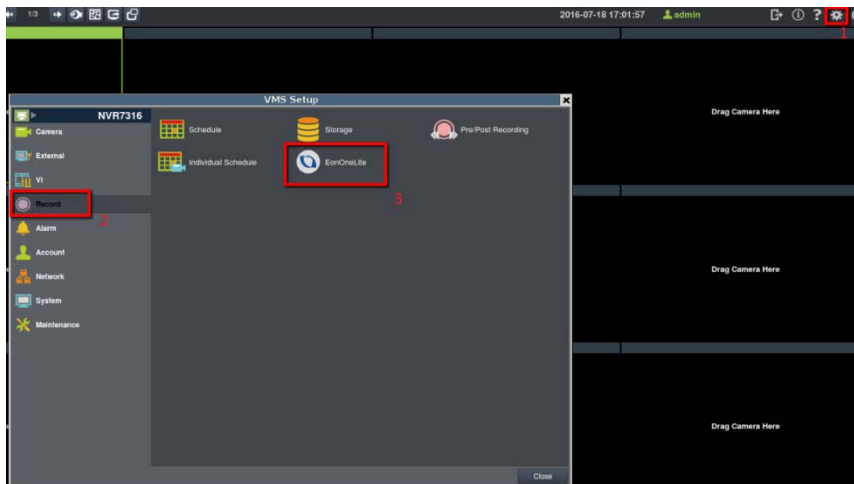
3. Install the controller back

Step 2. Power on NVR7316, and destroy RAID

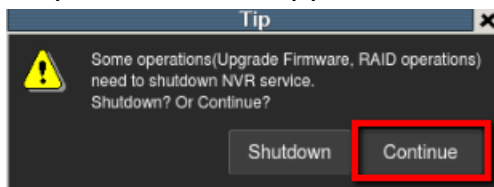
1. Make sure **there is NO other USB devices inserted with the NVR7316** (except the USB keyboard and USB mouse).
2. Power on the NVR7316.
3. You can see NVR7316 UI show on your screen.



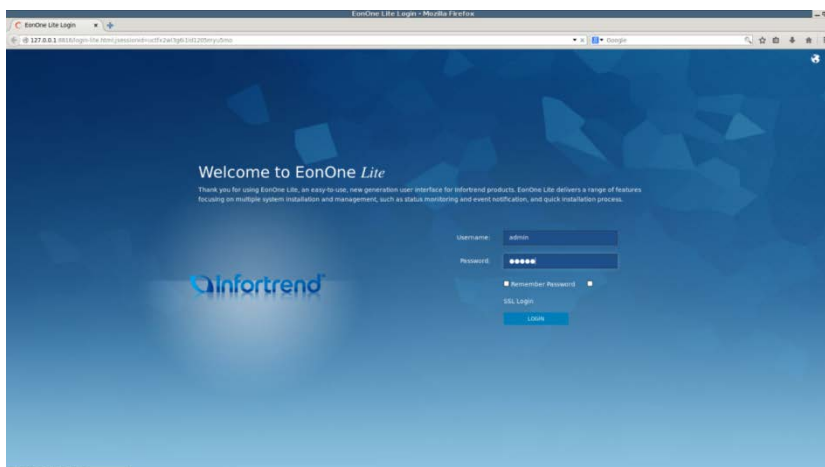
4. Press "Setup" → "Record" → "EonOneLite".



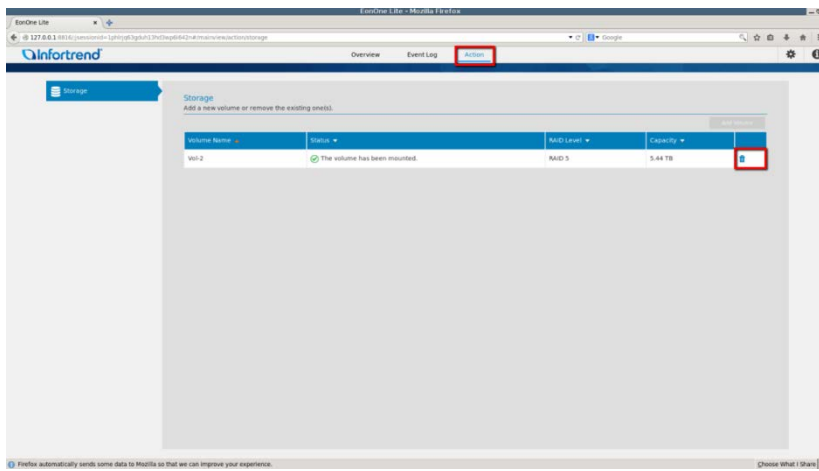
5. A tip window will appear. Press “Continue”.



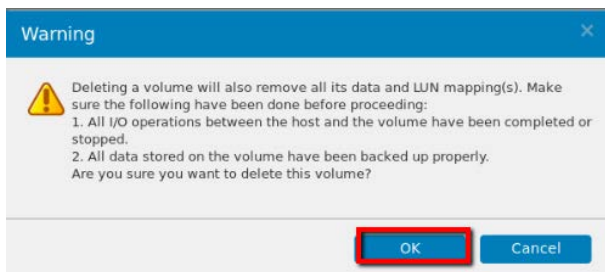
6. Log in EonOneLite. The username and password are : admin / admin.



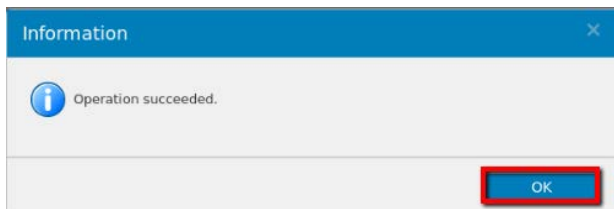
7. Select “Action” and delete your old RAID.



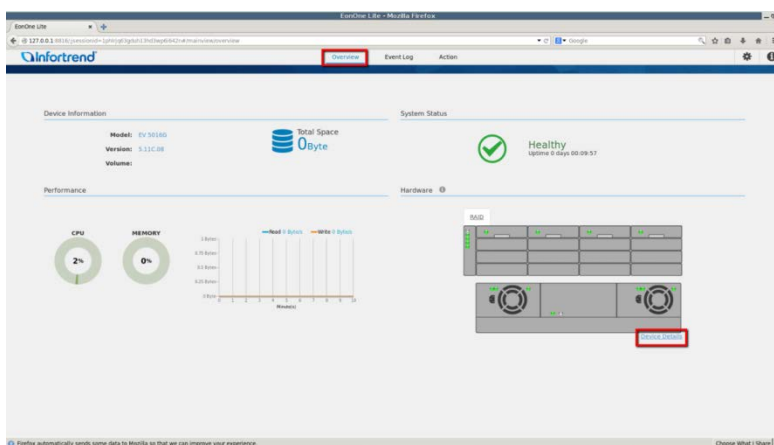
8. Press “OK” and wait for a while.



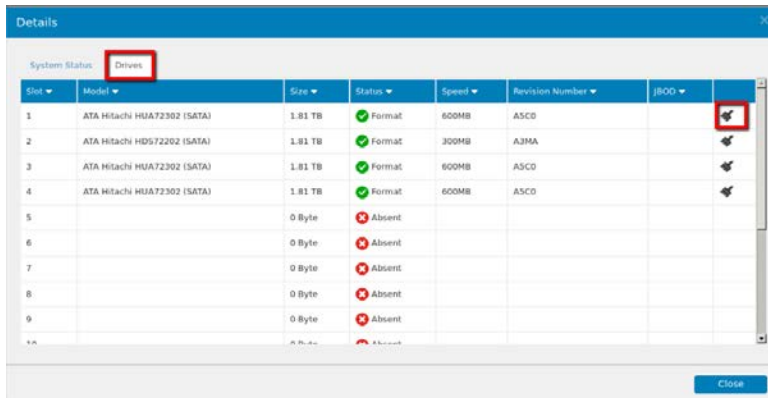
9. After finished, it will show the message as below. Press “OK”.



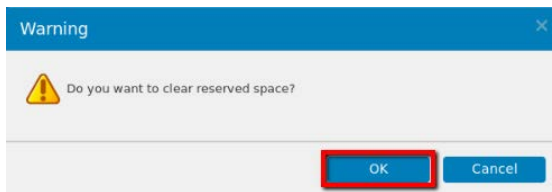
10. Select “Overview” and press “Device Details”.



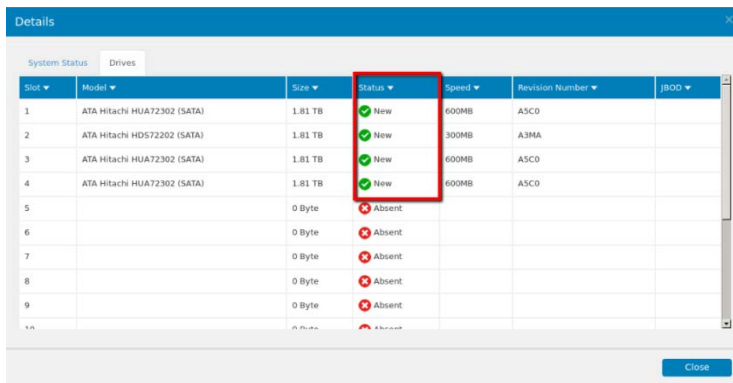
11. Press “Drives” and the icon marked below to reserve the HDD.



12. Press “OK” and wait for a while.

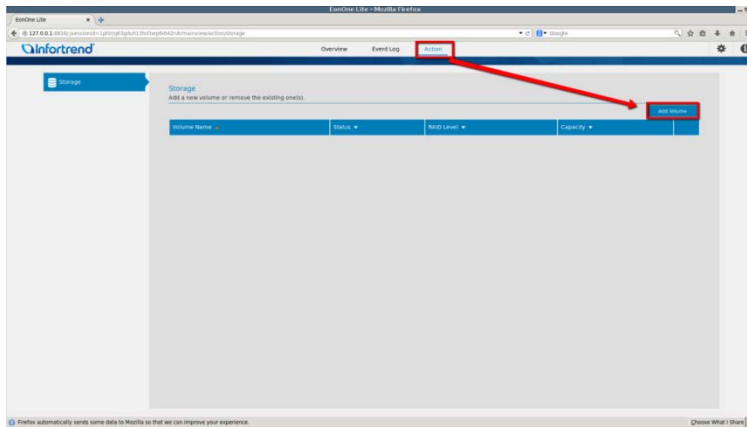


13. After the HDD is reserved, you can see the status shown as “New”.

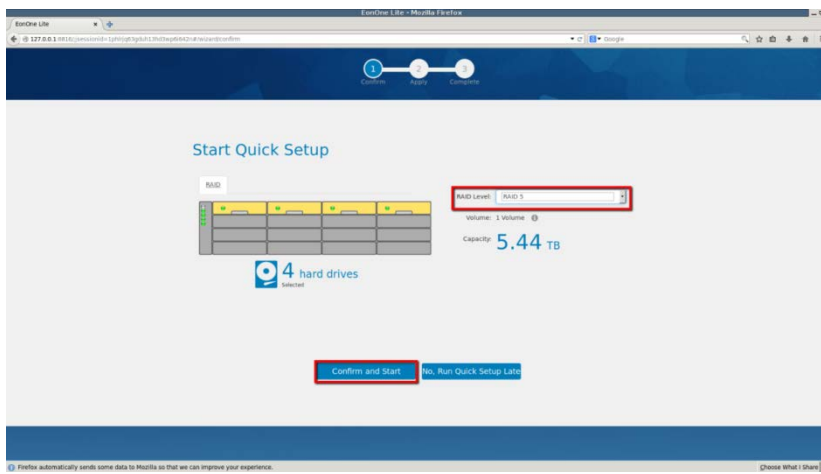


Step 3. Create RAID by EonOneLite

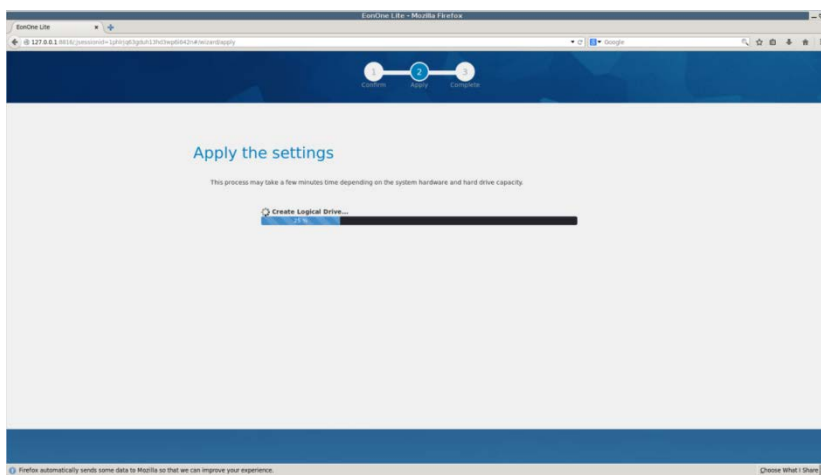
1. Select “Action” and press “Add Volume”.



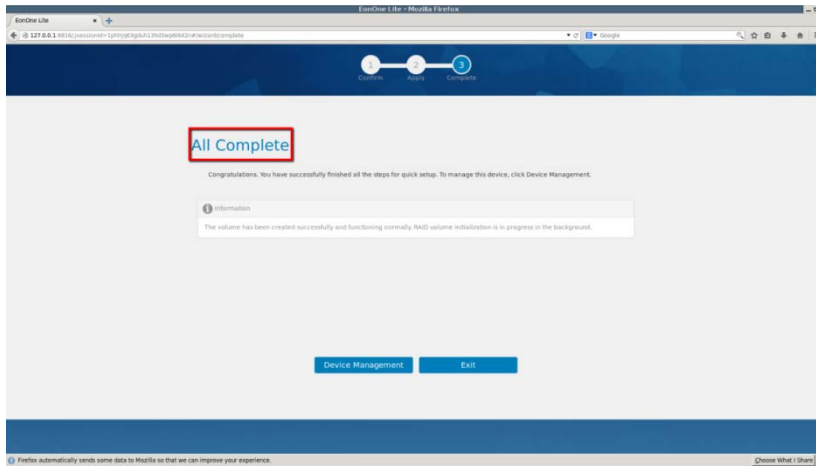
2. Confirm your HDDs have been detected and select “RAID Level”. Press “Confirm and Start”.



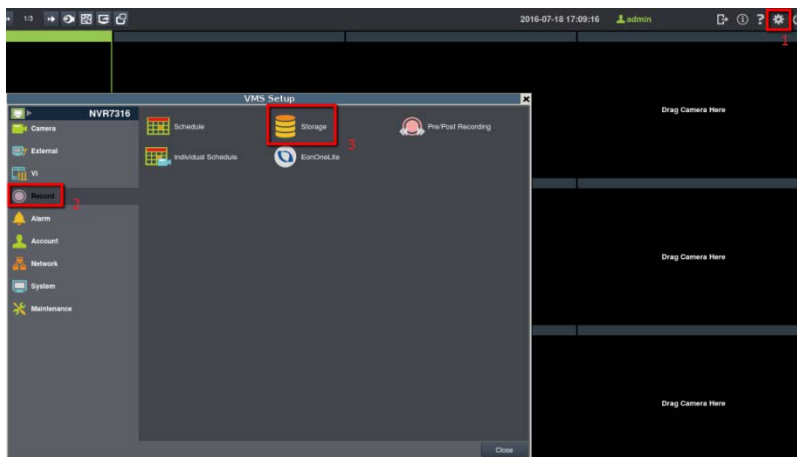
3. Please wait for a while.



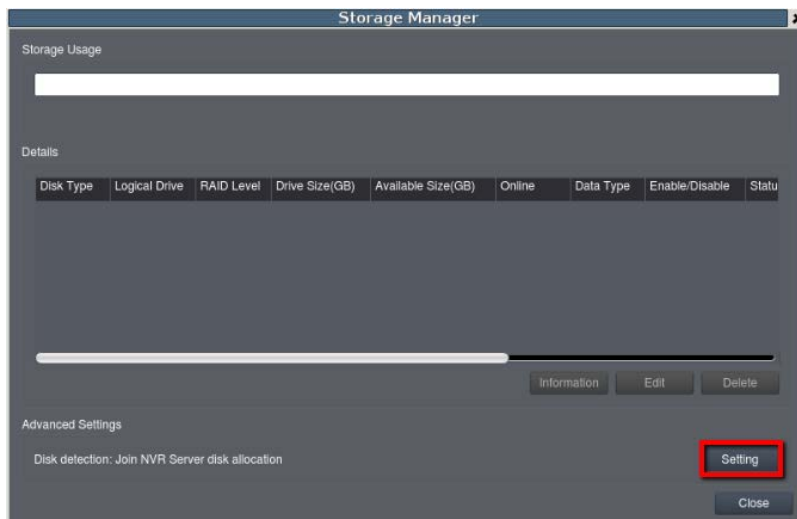
4. After finished, you will see “All Complete”. Press “X” to exit.



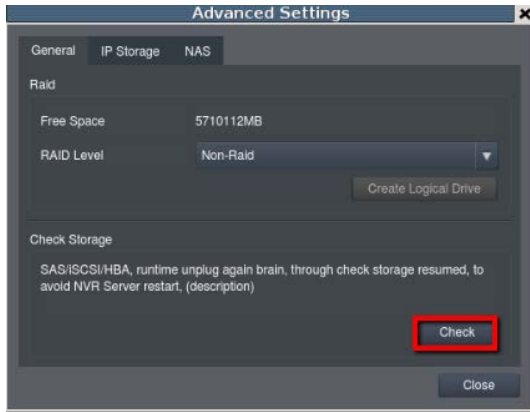
5. Press "Setup" → "Record" → "Storage".



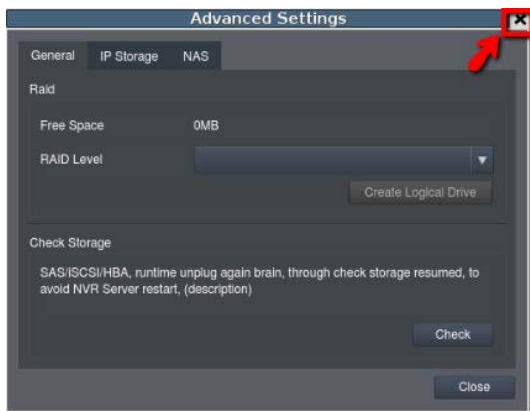
6. Press "Setting".



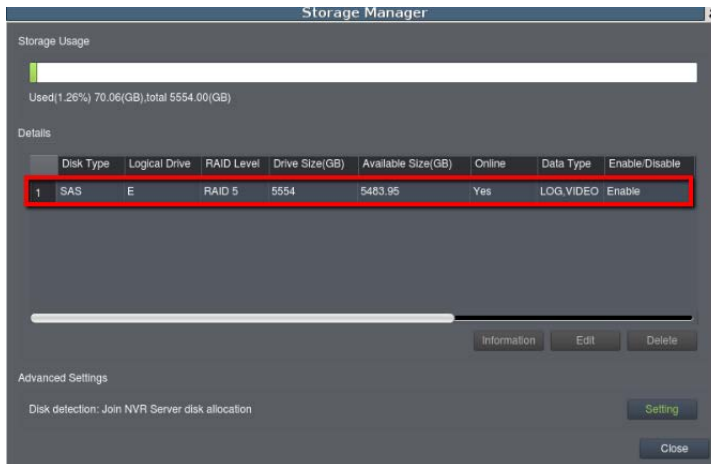
7. Press "Check" and wait for a while, system will mount your RAID on NVR7316.



8. After finished, press “X” to close the window.

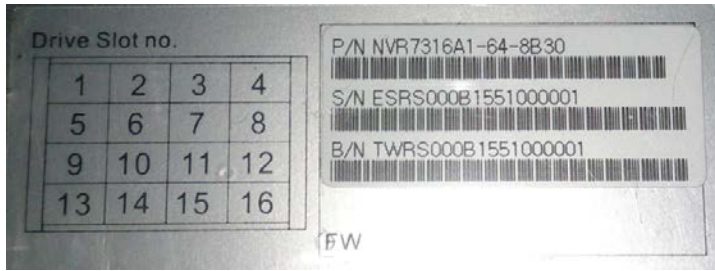


9. You will see your RAID on the list.



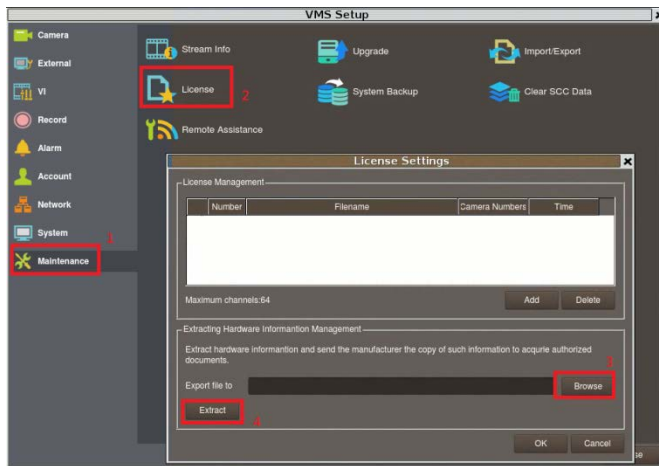
Step 4. Active the license

1. Check the NVR S/N information on the label.
The S/N should be ESR5000XXXXXXXXXXXX



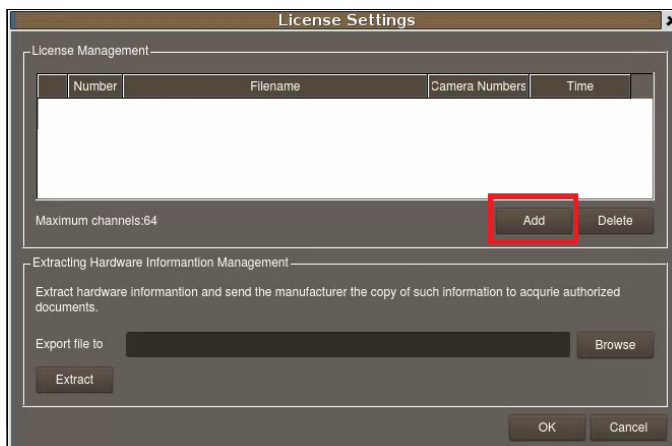
2. Go to "Setup" > "Maintenance" > "License Settings". Select "Browse" and click "Export".

Remember to insert a USB device before you select "Browse".

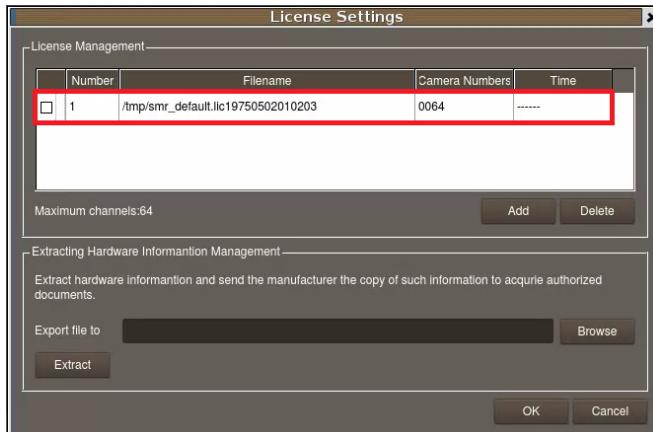


3. Please send **the exported file ".info"** to Surveon FAE and **tell us the S/N**. Surveon FAE will send back a ".lis" file.

4. Go to "License Settings" and click "Add". Select the ".lis" file sent from Surveon FAE. Then the license will be added back.



5. If the information below appears in License Settings, it means you successfully added the license back.



Appendix:

- If a network disconnected message appeared in the event window after NVR7316 reboot, it might indicate that NVR7316 LAN2 isn't connected to any network device. You can check more detail in View Log.

