



How to Rebuild RAID for NVR7800

Application Notes

Version <1.0>

Preface

This application note provides a step-by-step instruction on how to rebuild RAID for NVR7800.

Caution

Before you rebuild RAID, please set Milestone file path to another drive, or else Milestone's record service may crash.

Scope

Product model	Firmware version
NVR7800	Full version

Follow the four steps in the sections below.

Step 1. Set Milestone file path to another drive

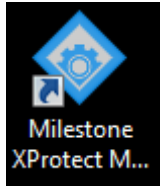
Step 2. Delete RAID by EonOne Lite

Step 3. Create RAID by EonOne Lite

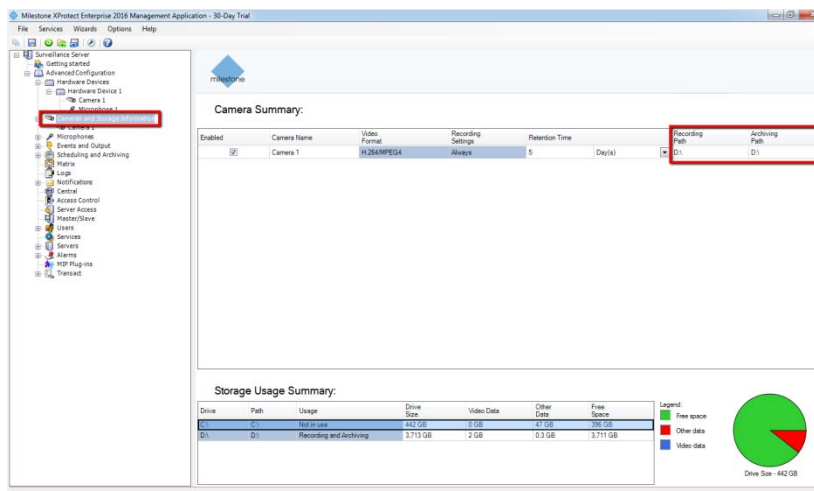
Step 4. Mount RAID on NVR7800

Step 1. Set Milestone file path to another drive

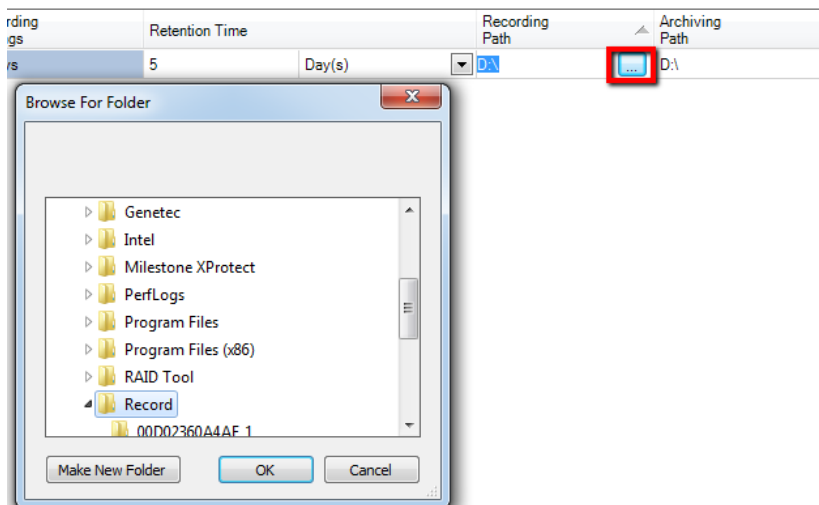
1. Click “Milestone XProtect Management Application.”

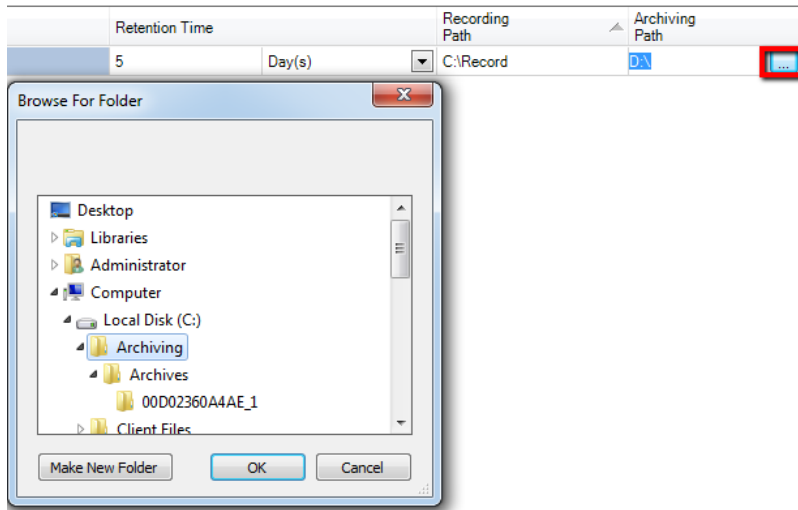


2. Select “Camera and Storage Information” and click on your file path.

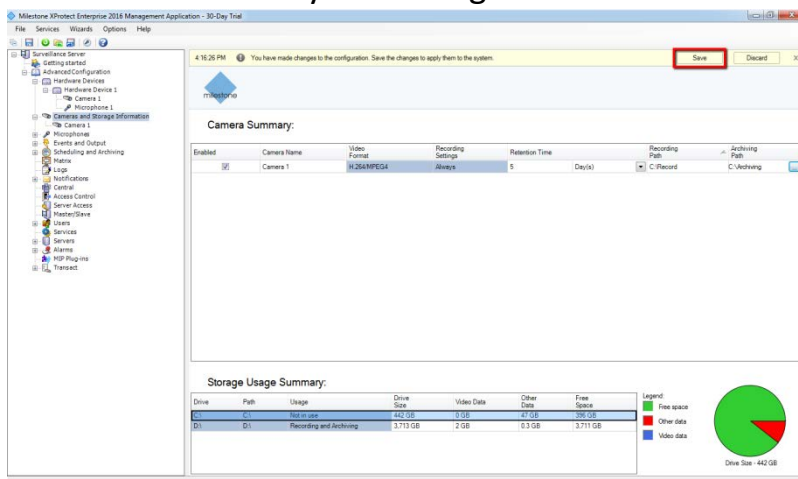


3. Click “...” and select your new file path (Do not select the drive which you want to rebuild).

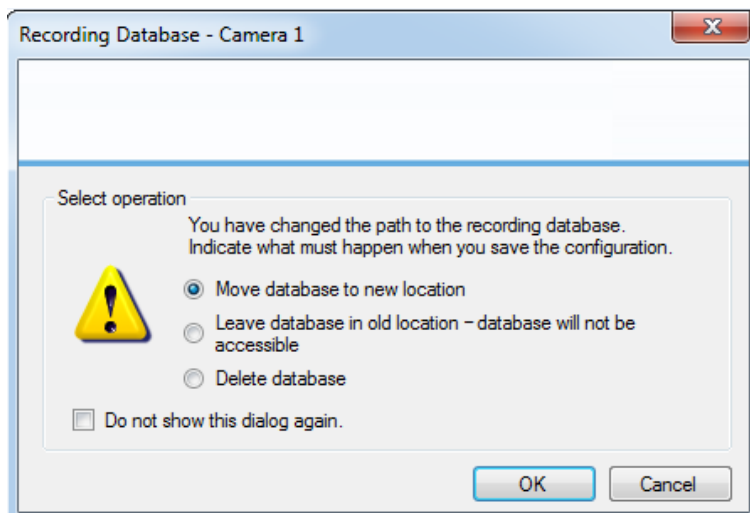


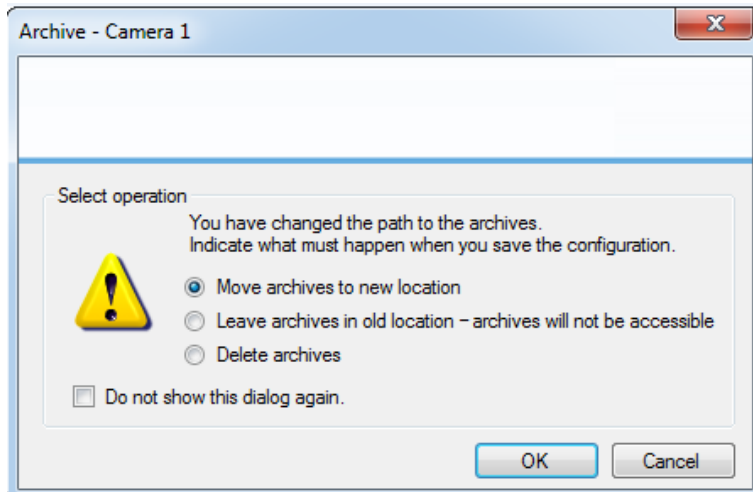


4. Click “Save” to save your setting.



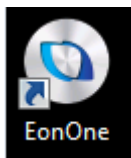
5. Milestone will show the message as follows. Select “Move database to new location” and click “OK.”



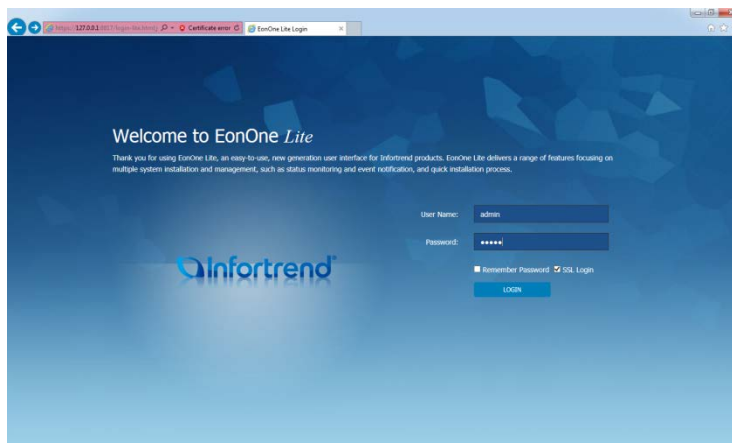


Step 2. Delete RAID by EonOne Lite

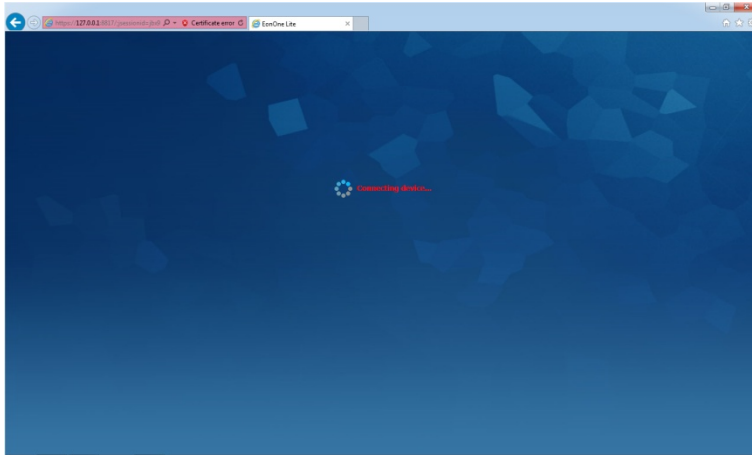
1. Click "EonOne" on your desktop.



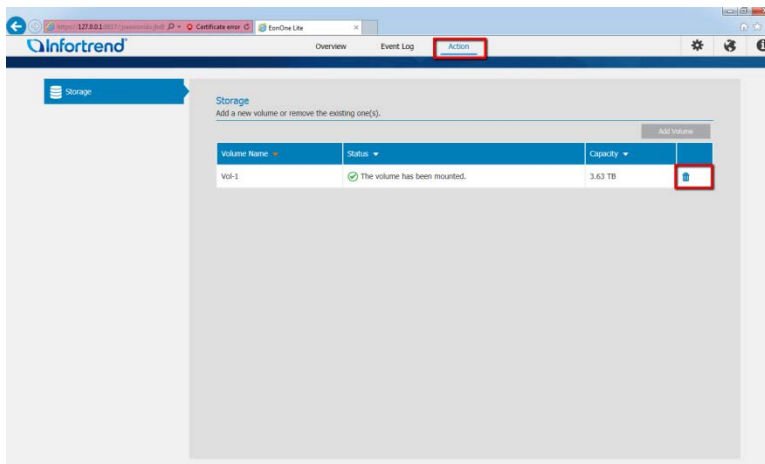
2. Enter username: admin and password: admin to log in EonOne Lite.



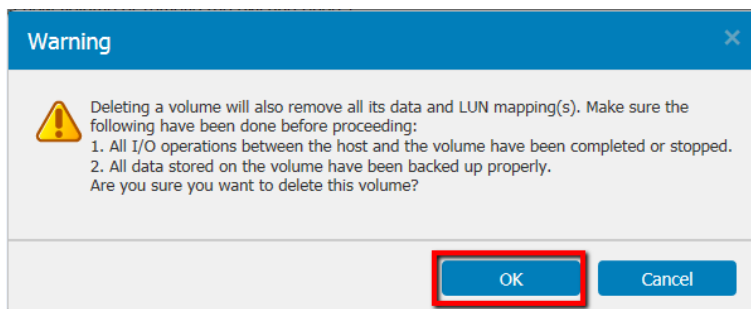
3. EonOne Lite is connecting to your device.



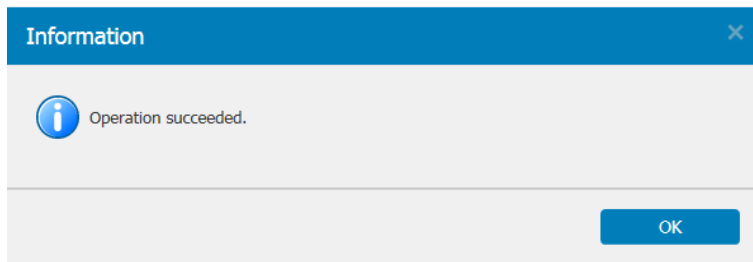
4. Select "Action" and click on the recycle bin icon to delete your RAID.



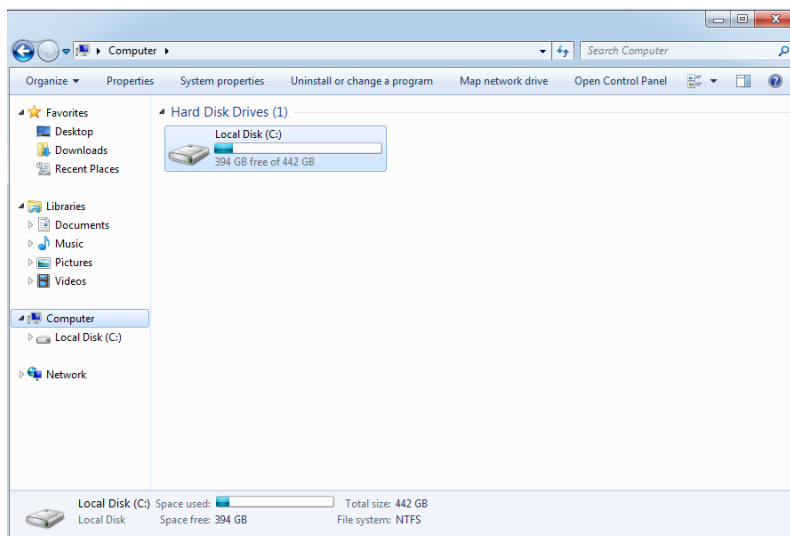
5. Click "OK" to continue.



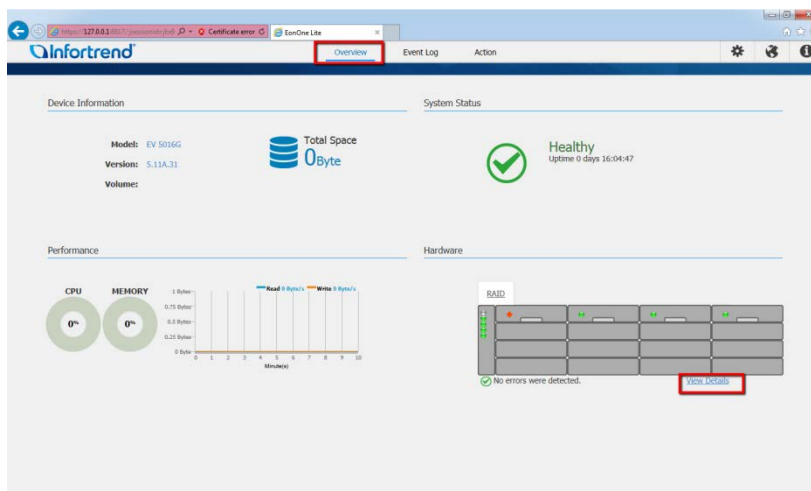
6. After the process is finished successfully, EonOne Lite will show a message. Click "OK" to exit.



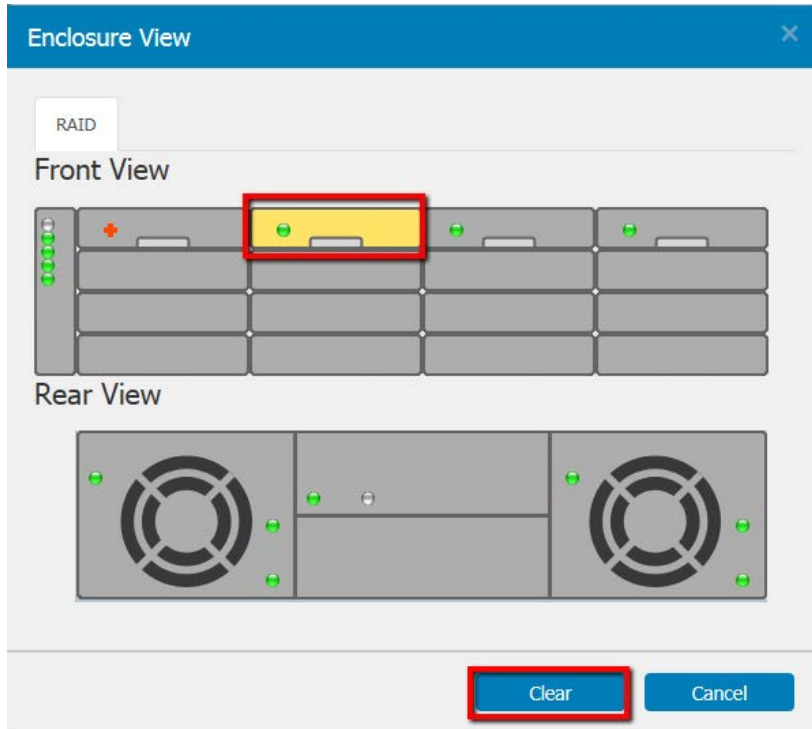
7. To make sure the RAID has been deleted, you can go to "Computer" to check it.



8. In EonOne Lite, select "Overview" and click "View Details."



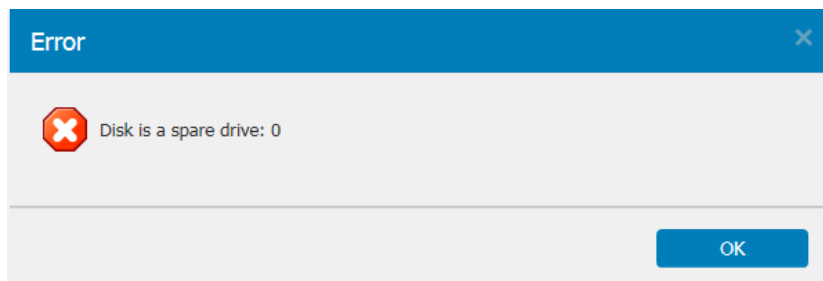
9. Select the HDD and click "Clear" to clear all HDDs.



10. After the HDDs are cleared successfully, EonOne Lite will show the message. Click "OK" to close it.

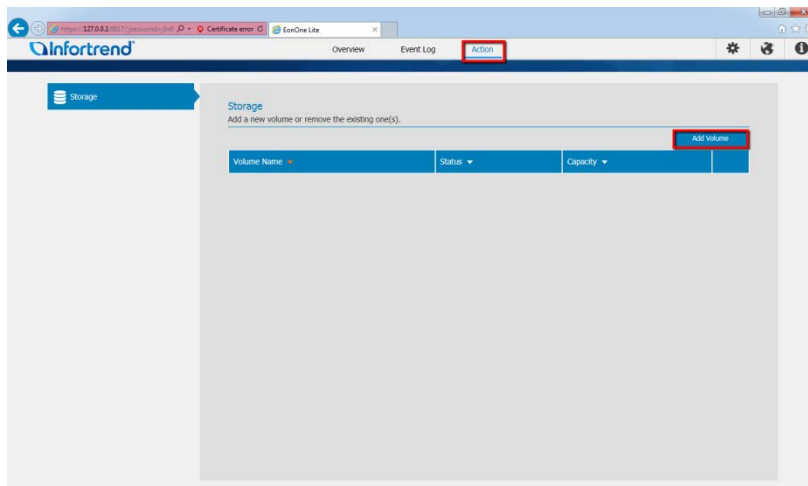


11. Every RAID will take one spare drive and the spare drive can't be cleared.

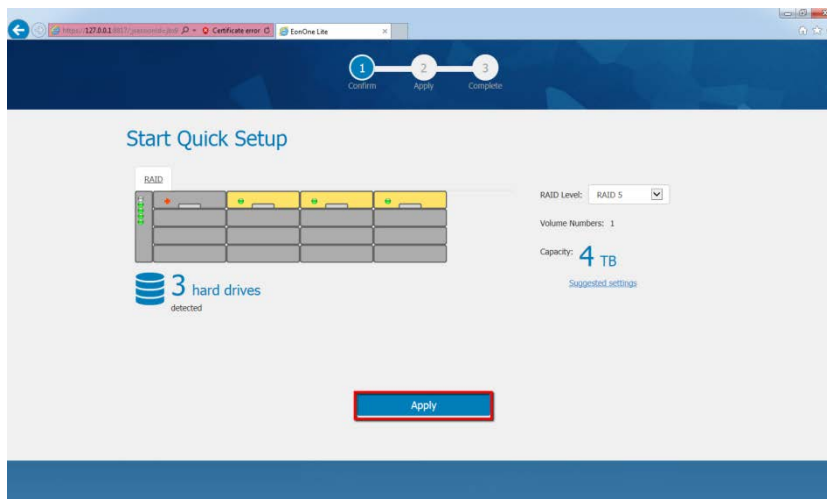


Step 3. Create RAID by EonOne Lite

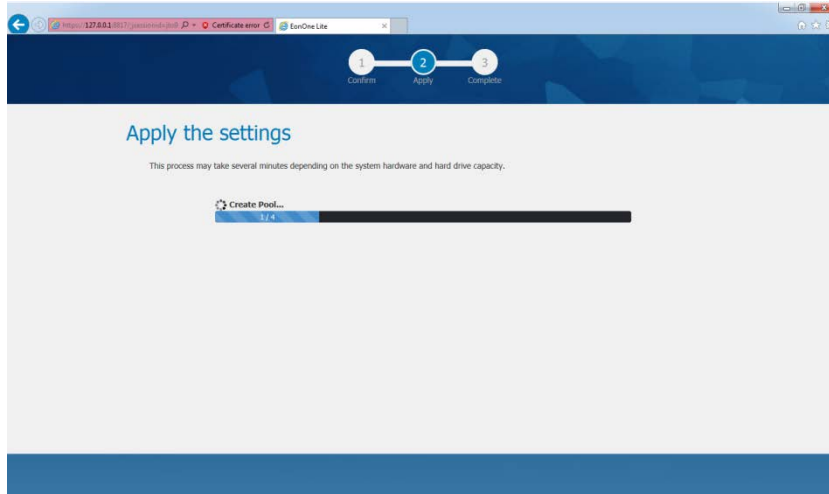
1. Select “Action” and click “Add Volume.”



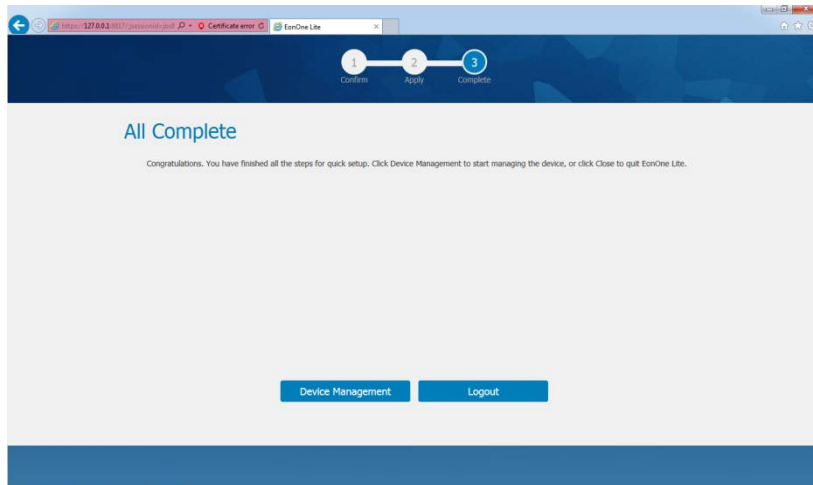
2. Check that your HDDs have been detected, select “RAID Level” and click “Apply” to create RAID (The + icon means the HDD is a spare drive)



3. EonOne Lite is creating your RAID. Please wait.

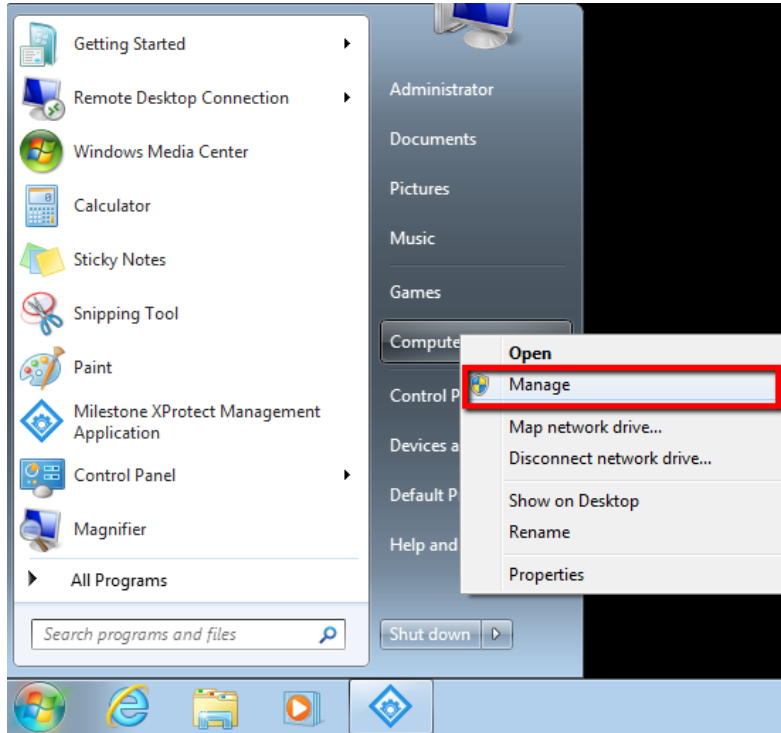


4. After you see the message that RAID has been created successfully, click "X" to exit.

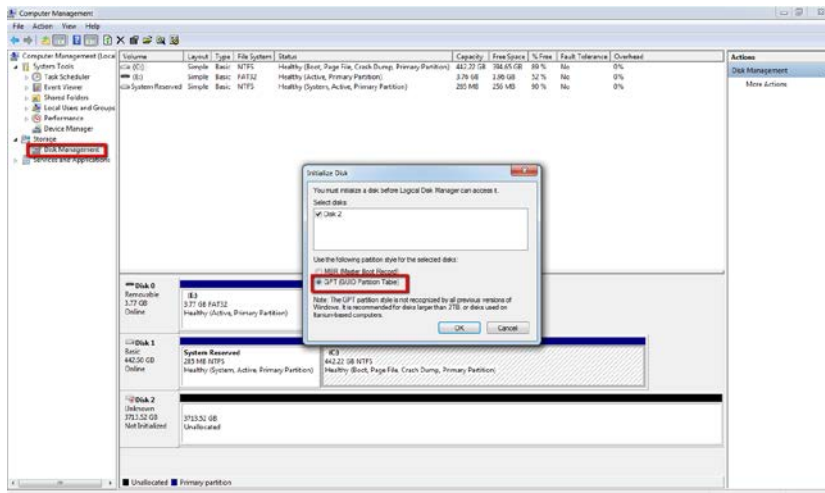


Step 4. Mount RAID on NVR7800

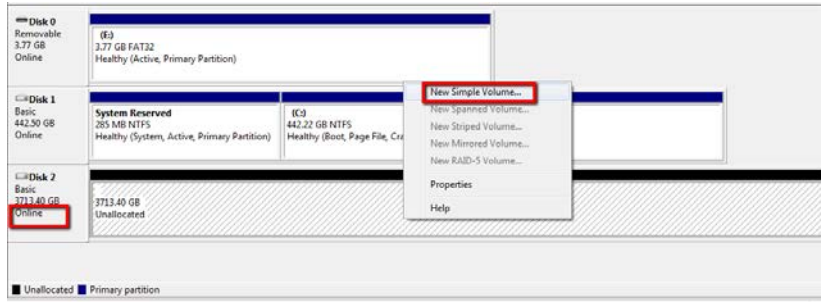
1. Click "Start" → Right click "Computer" → "Manage".



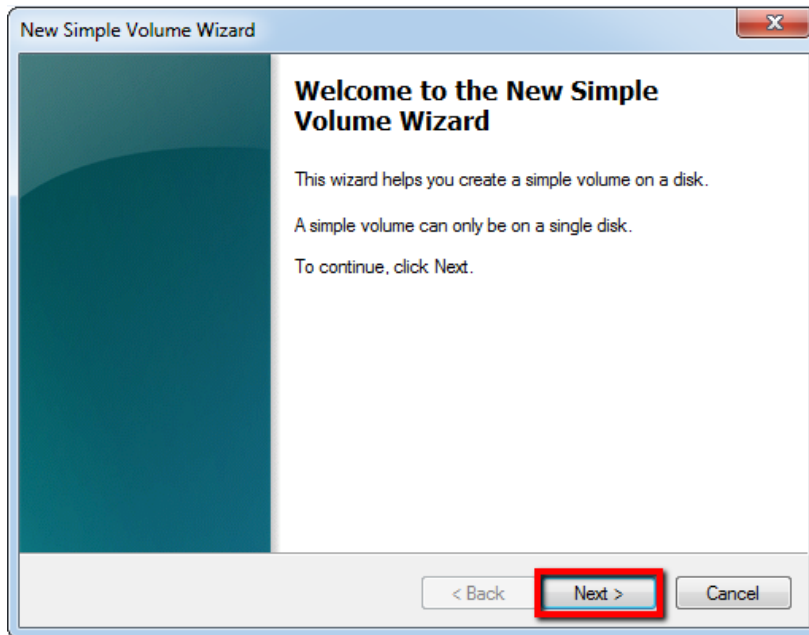
2. Select “Disk Management” and a window will pop up. Select “GPT (GUID Partition Table)” and click “OK.”



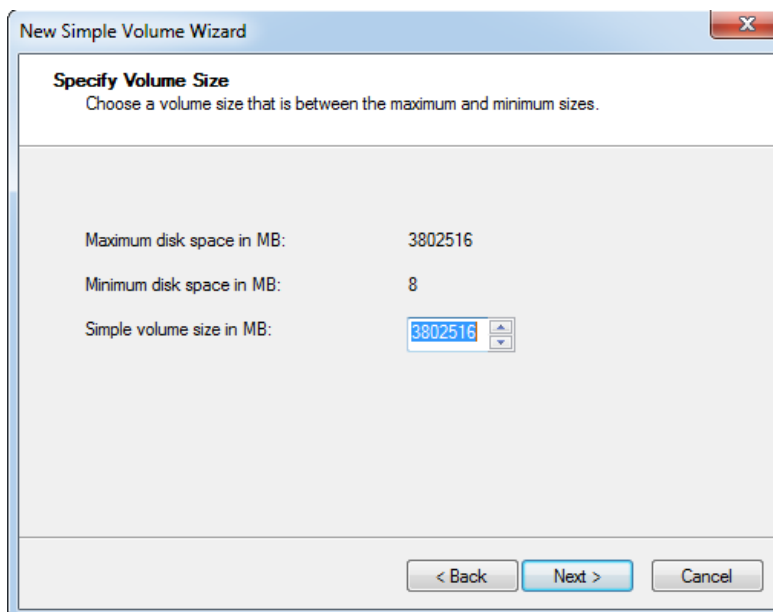
3. The disk status will become “Online”, right click the partitions and click “New Simple Volume...”.



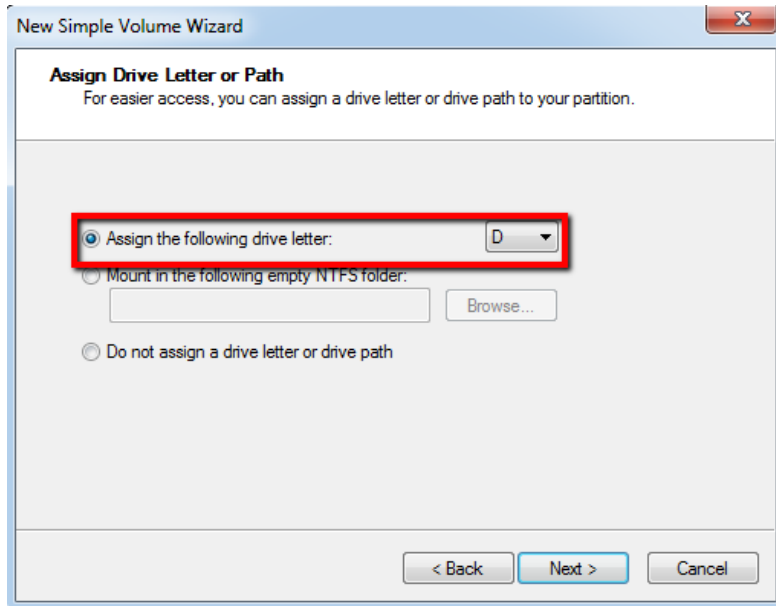
4. Click “Next.”



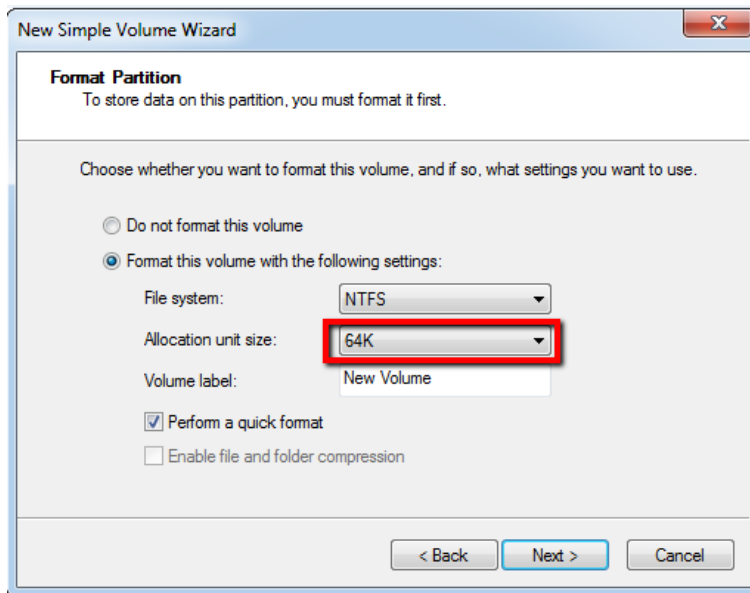
5. Enter the size and click “Next.”



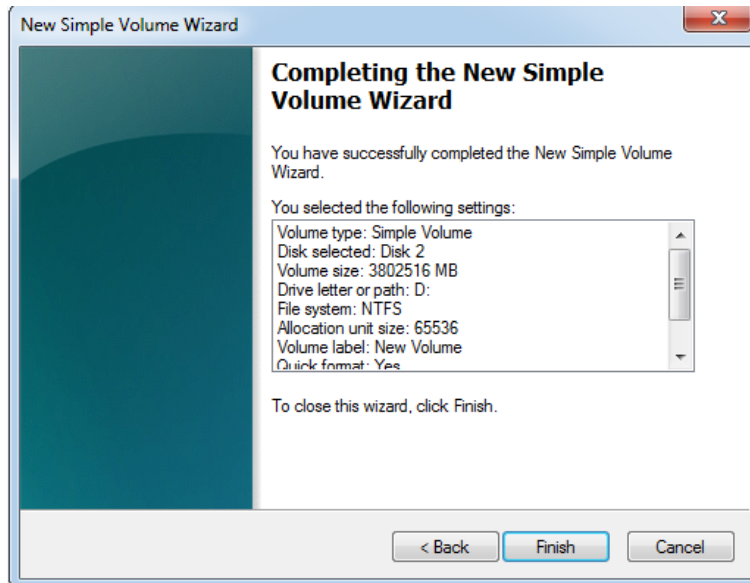
6. Assign the drive letter and click “Next.”



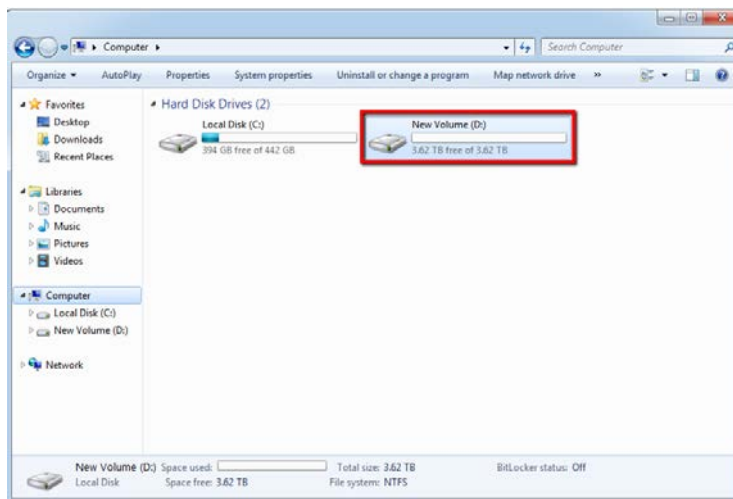
7. Select “64K” in “Allocation unit size” and click “Next.”



8. The process is completed. Click “Finish” to exit.



9. You can go to "Computer" and you will see your new drive.



✂ If you want to record to the new drive by Milestone, follow step 1 to change the file path.