

Surveon Safeguard Post Offices in Cairo with Reliable Surveillance Solutions

From regular postal service to different types of financial services, the post office plays an important role in our daily life. With convenient locations, it's natural for people to come around doing business in the post office. While being open to the public, the post offices in Cairo are also likely to be exposed to potential threat or malicious attack. To protect the visitors, staff and its assets with efficiency, the visual clarity of megapixel cameras and data protection of recorded videos are becoming more important to the post offices security projects. With Surveon's reliable surveillance solutions, including megapixel camera and professional megapixel recorder, more than 100 post offices are under solid surveillance protection to ensure the safety and their services can be delivered with best quality.

Customer

Serving people for a century, the Egyptian post office with more than 100 branches in Cairo has developed and explored their services scope with times, providing financial, postal, community, printing and publishing services to the whole country. Due to the open nature and the variety of post office operations, the offices in Cairo need to upgrade their surveillance system to monitor main entrance and front desks with improved images while being cost-efficient.

Challenges

Reliable Performance

Deploying hundreds of camera and recorder in different locations can be time-consuming. Meanwhile, the stability of monitoring system needs to be seriously taken account for its project scale and daily operation. The SI needs to find a solution which can provide the most reliable performance with easy installation.

Recorded Video Data Protection

To avoid the loss of confidential data from post office surveillance system, the non-stop recording and protection of recorded videos are crucial factors to consider when it comes to planning a proper management system.

Solutions

Industrial-grade Network Cameras

Surveon's 2MP compact box camera CAM1301 is selected for the main entrance and front desk of the post office. It provides smart WDR and IR LED to ensure clear images under different lighting circumstances. The compact design makes the cameras less intrusive for visitors while the surveillance is under going. All Surveon megapixel cameras are with industrial-grade components, in-house design and 3-year warranty to ensure product reliability for long-term operations.



Summary

Customer:

Post Offices, Cairo

Project Needs:

- Reliable performance
- High-resolution image
- 24/7 non-stop recording
- Cost-saving solutions

Surveon Solutions:

Complete solutions with the following:

- CAM1301 2MP Compact Box Network Camera
- SMR2006 Linux RAID Megapixel Tower NVR
- Surveon Enterprise VMS

Surveon Solution Benefits:

- Industrial-grade network cameras
- Professional megapixel video recorders
- Non-stop recording for 30 days & easy video management
- 100% in-house design and production

Professional Megapixel Video Recorders

Supporting up to 6-channel with 200 Mbps recording throughput, the Surveon SMR2006 with 2 hot-swappable hard disks and RAID 1 data protection was chosen to provide reliable performance for 24/7 non-stop megapixel recording. Along with the tower design and low power consumption, the SMR2006 provides a simple and cost-effective solution for this case.

Enterprise Central Management Software

The SMR2006 also comes with Surveon VMS, offering rich services including camera control, live monitoring, recording, configurable playback, and alarm handling. It supports VA notifications to ensure accurate actions can be taken immediately.

Benefits

Excellent Image Quality and Reliability

Surveon cameras provide high image quality with WDR allowing the security guards to recognize crucial details even under lighting contrast situation such as main entrance. With industrial grade components, Surveon guarantees high quality with its extremely low RMA rate so the reliability can be assured.

Secured Data Storage & Easy Video Management

SMR2006 is the best in class NVR that supports megapixel quality video of 6 channels for video retention periods from 7 to 30 days or more and RAID function to enhance data protection. Paired with Surveon's scalable enterprise VMS, the solution not only improves safety and security, but provides robust prevention, preparedness, detection, and quick response measures for the post offices.

"We are pleased with the performance of the surveillance system and also impressed with the good quality from Taiwanese products. Surveon's comprehensive solutions always can provide the affordable yet professional solutions for our projects." said Surveon's partner in Egypt.

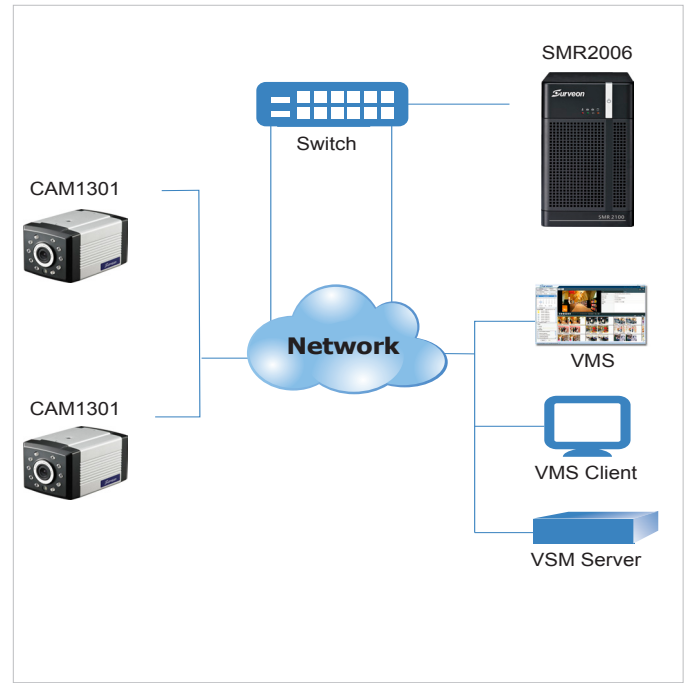


Figure 1: Distributed Architecture

About Surveon

Surveon Technology offers end-to-end network video surveillance solutions that showcase our expertise in professional camera design, RAID NVR, high-availability video storage, embedded firmware and video management software. All Surveon products are designed in-house and manufactured on our ISO 9001 and ISO 14001 certified production site to ensure the highest quality for our partners.